



# morton.

**WENTWORTH POINT** 1 Stromboli Strait

1 1 1

Space efficient open plan one bedroom apartment with NE aspect and internal courtyard outlook. Open plan kitchen flows to external covered balcony, contemporary style finishes, stainless steel appliances, stone benchtops, internal storage area or study nook.

- \* R/cycle air conditioning
- \* Lift access to secure car park
- \* Audio/visual intercom
- \* Access to Pulse Club with indoor heated lap pool
- \* Gym and tennis courts
- \* Cafes and Restaurants on site
- \* Adjacent to Sydney Olympic Park
- \* Surrounded by 425 hectares of urban parkland for your enjoyment

Strata Levies \$795 p/q  
Council Rates \$207 p/q approx  
Water Rates \$140 p/q approx

## View

As advertised or by appointment

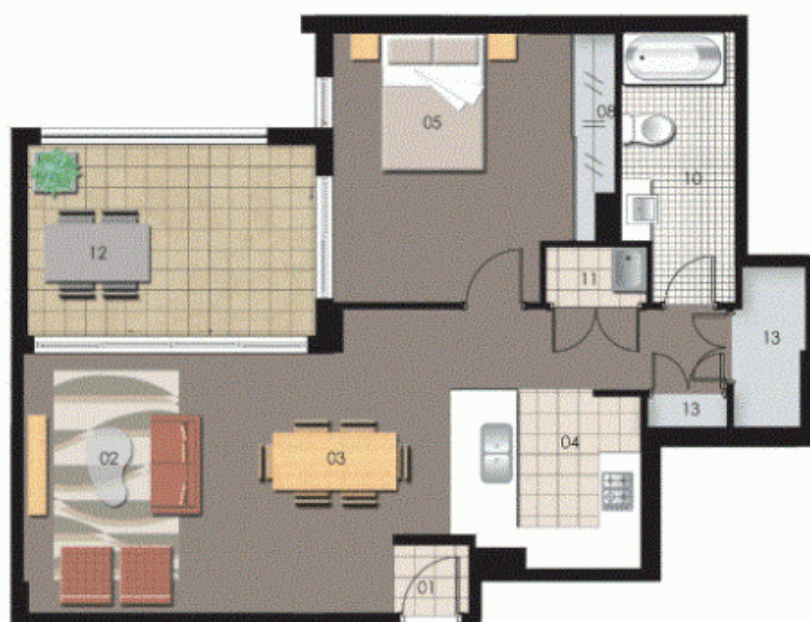
## Agent

**Sarah Fowell**

0437 492 129  
rentals@morton.com.au

**morton.com.au**





0 1 2 3 4 5

ENTRY	01	WARDROBE	08
LIVING	02	ENSUITE	09
DINING	03	BATHROOM	10
KITCHEN	04	LAUNDRY	11
BEDROOM 1	05	BALCONY	12
BEDROOM 2	06	STORAGE	13
BEDROOM 3	07		



## Unit 310

Lot Number	17
Type	1 Bedroom
Unit Area	64 sqm
Balcony	12 sqm
Total	76 sqm