



# morton.

**WENTWORTH POINT** 2 The Piazza

2 2 1

This two bedroom apartment 92 sqm has outlook over The Piazza from North / North West 18 sqm balcony. Lots of natural light, modern kitchen with stone benchtops and s/steel appliances, bedrooms on either side of open plan living area, main bedroom with ensuite, audio/visual intercom and secure basement parking serviced by lift.

- \* Open plan living and dining
- \* Outlook over The Piazza
- \* Two bedrooms with built ins
- \* Two bathrooms, ensuite to main bedroom
- \* Security building with audio/visual intercom
- \* Resort facilities on site, heated indoor pool
- \* Gym, sauna & tennis courts
- \* Currently leased at \$480 p/w, expires September 2012

Strata Levies \$1202 p/q  
Council Rates \$219 p/q approx  
Water Rates \$156 p/q approx

### View

As advertised or by appointment

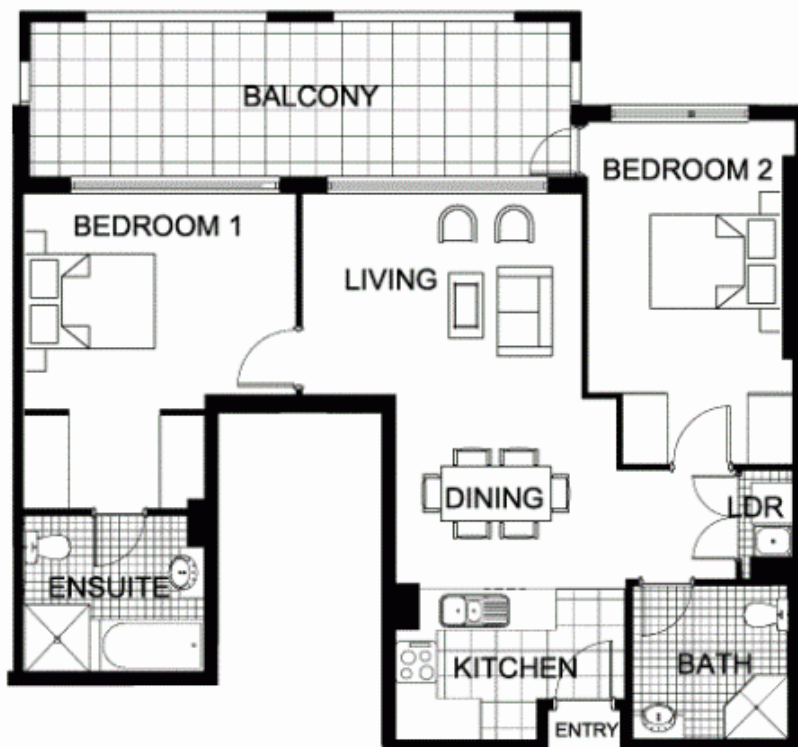
### Agent

**Sarah Fowell**

0437 492 129

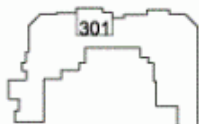
rentals@morton.com.au

[morton.com.au](http://morton.com.au)



0 1 2 3 4 5

"The information contained herein is intended as an introduction to the general content of the project and is subject to variation. Interested parties should rely on their own enquiries and the contract for sale. The developer reserves the right to vary from these descriptions as it deems necessary or as any relevant authority may require."



2 BEDROOM

APARTMENT 301

TYPE N

INTERNAL AREA 74sqm

OUTDOOR AREA 18sqm

TOTAL AREA 92sqm

LEVEL 3

MYKONOS