



morton.

WENTWORTH POINT 25 Bennelong Road

 2  2  1

Two bedroom apartment with study area and excellent balcony space 24 sqm, generous open plan living area, sunny North East aspect and Olympic Park views, larger than average floor plan...will appeal to prospective owner occupier or investor.

Pulse Lifestyle Club on site with indoor heated pool, steam room, gymnasium, tennis courts. Enjoy The Piazza cafes, restaurants, day spa, hairdresser. The Waterfront estate is surrounded by 45 hectares of parkland, cycling tracks and walkways and adjacent to the Sydney Olympic Park precinct. Currently rented at \$450 per week on an expired lease.



Strata Levies \$1302 pq approx
Council Rates \$ 190 pq approx
Water Rates \$ 135 pq approx

View

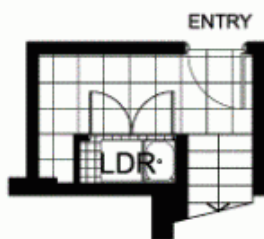
As advertised or by appointment

Agent

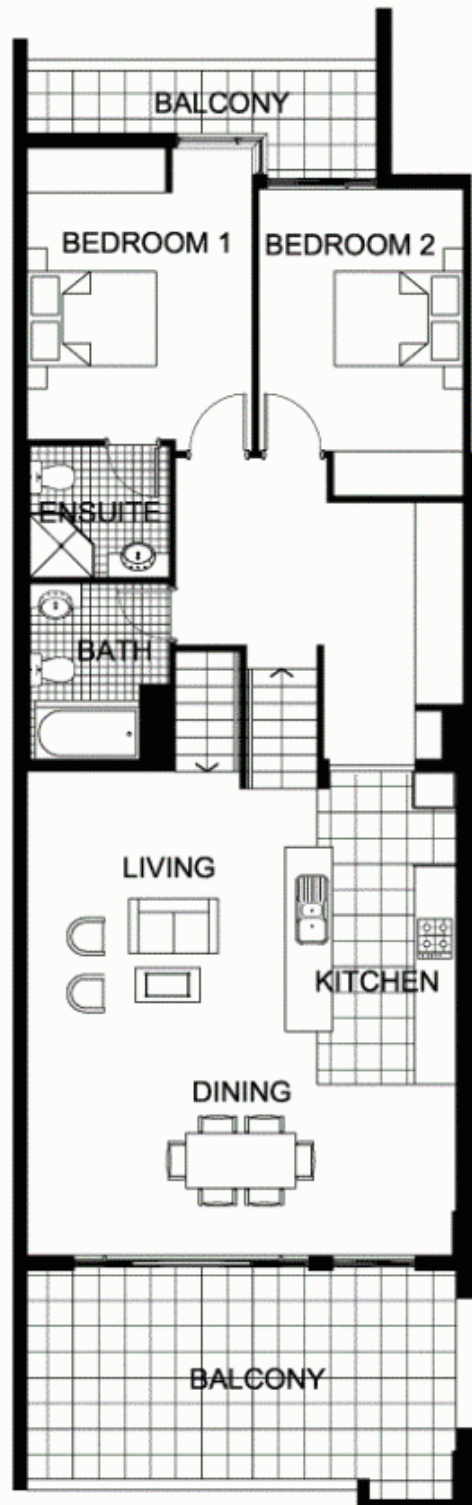
Sarah Fowell

 0437 492 129
 rentals@morton.com.au

morton.com.au



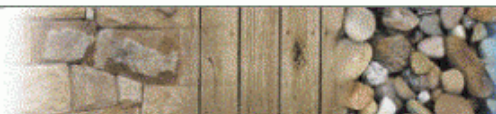
LEVEL 2



LEVEL 3



"The information contained herein is intended as an introduction to the general content of the project and is subject to variation. Interested parties should rely on their own enquiries and the contract for sale. The developer reserves the right to vary from these descriptions as it deems necessary or as any relevant authority may require."



THE WATERFRONT
AT HOMEBUSH BAY

2 BEDROOM

APARTMENT 220(Exist No.305)

INTERNAL AREA 107 sqm

OUTDOOR AREA 24 sqm

TOTAL AREA 131 sqm



LEVEL 3

POSITANO