



# morton.

**RUSSELL LEA** 34 Edenholme Road

 3  1  1

This traditional 1930s Californian bungalow blends the features of the era with the functionality of modern living. Accommodation includes 3 large bedrooms, separate TV room, and a north facing sun drenched living room with polished timber floors. Suitable for immediate occupation and with potential to expand with a second storey (STCA). This great home accompanied by manicured gardens is ideal for any family or couple looking to stake their claim in one of Russell Leas premier streets.

- \* Moments to Wareemba Village.
- \* Walking distance to schools
- \* One minute walk to city buses
- \* Close to parks of Chiswick, Abbotsford, Wareemba and Five Dock
- \* Minutes to the famous Bay Run



[morton.com.au](http://morton.com.au)

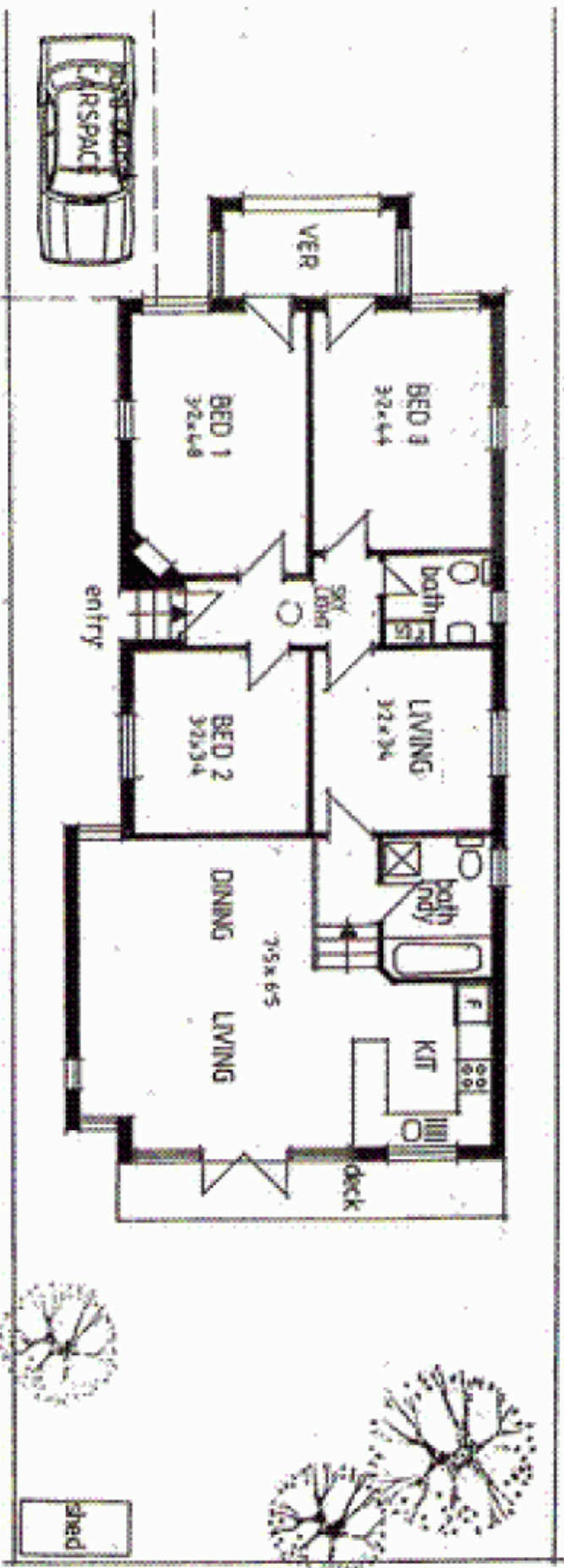
### View

As advertised or by appointment

### Agent

**Sarah Fowell**

 0437 492 129  
 [rentals@morton.com.au](mailto:rentals@morton.com.au)



34 EDENHOLME ROAD RUSSELL LEA



This diagram is for illustrative purposes only. All reasonable care has been taken in the preparation, but no warranty is given as to the accuracy of the information. This document does not constitute any part of any offer or contract. Dimensions shown are approximate only. Prospective purchasers must rely on their own enquiries.