



morton.

Wentworth Point 208/37 Amalfi Drive

🛏 2 🚿 2 🚗 1

This super sized 148 sqm two bedroom unit features a large open plan living area which opens out to an extensive and private entertainers terrace. The upper floor boasts a king sized master en-suite and second large double bedroom both with built in wardrobes. Both bedrooms have access to own private balconies. Immaculately presented, this opportunity is sure to be popular and an early inspection is recommended.

View

As advertised or by appointment

Agent

Sarah Fowell

📞 0437 492 129

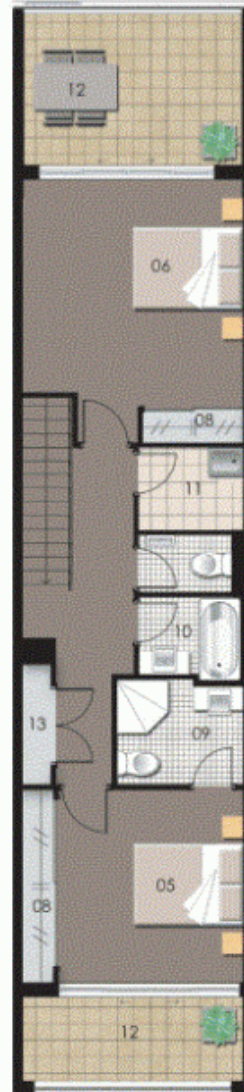
✉ rentals@morton.com.au

- * Expansive living and dining room
- * Large private covered entertainers terrace
- * Fitted kitchen with stone bench tops, gas cooking and dishwasher
- * King size master bedroom with en suite and built-in wardrobe
- * Sizable second bedroom with built-in wardrobe
- * Second bathroom with bath tub
- * Private covered balconies to both bedrooms
- * Internal laundry room with dryer
- * Audio/visual security intercom
- * Secure undercover parking space

morton.com.au



LEVEL 2



LEVEL 3

0 1 2 3 4 5

ENTRY	01	WARDROBE	08
LIVING	02	ENSUITE	09
DINING	03	BATHROOM	10
KITCHEN	04	LAUNDRY	11
BEDROOM 1	05	BALCONY	12
BEDROOM 2	06	STORAGE	13
BEDROOM 3	07	COURTYARD	14



Unit 208

Lot Number	11
Type	2 Bedroom
Unit Area	110 sqm
Courtyard	21 sqm
Balcony	17 sqm
Total	148 sqm