

morton.

WENTWORTH POINT 5 Stromboli Strait

 3  2  2

Located within The Waterfront precinct on Homebush Bay, this three bedroom first floor apartment offers open plan living, galley style kitchen with eat in area, separate living/dining room flows to a covered alfresco balcony with East and West elevations of sun and light, cross flow ventilation and afternoon sea breezes. Elevator access to lock up two car garage and storage within a secure basement, audio/visual intercom security. Solid, full masonry, low rise courtyard style building.

Pulse facilities includes professional gym, heated indoor pool, tennis courts and resort style outdoor pool, opposite to all The Waterfront facilities.

Strata Levies \$1792 p/q

View

As advertised or by appointment

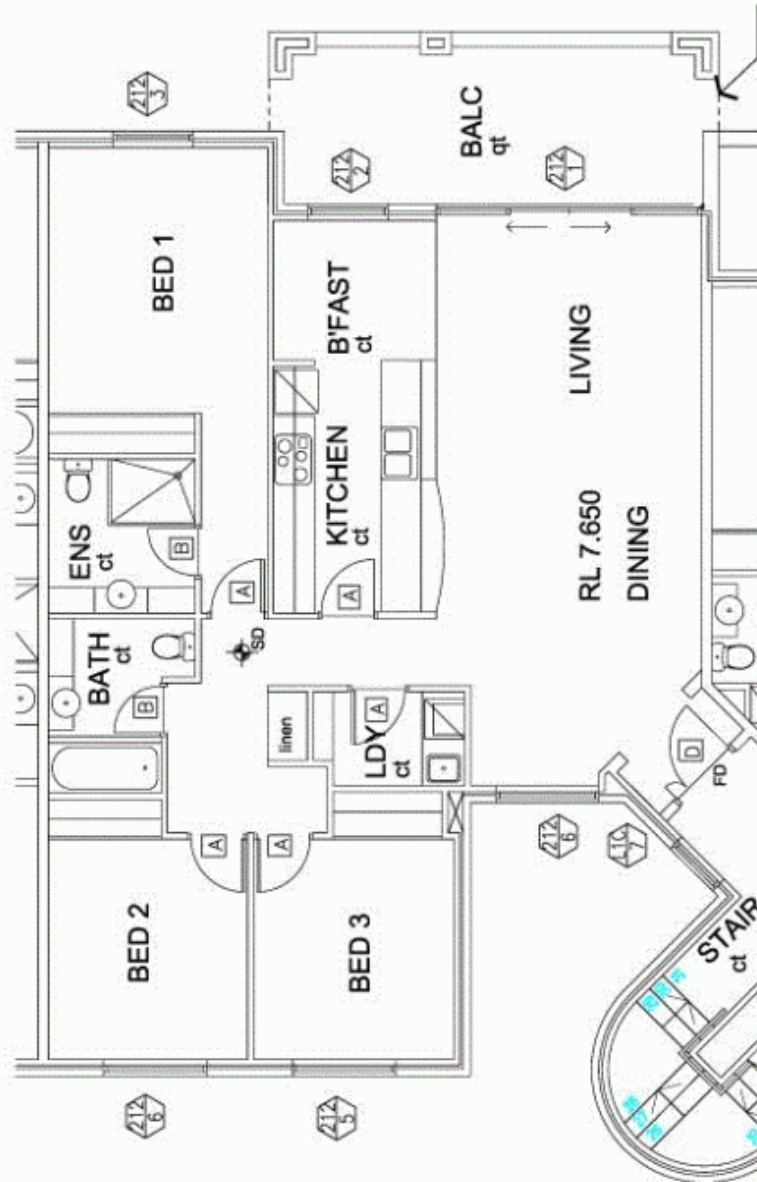
Agent

Sarah Fowell

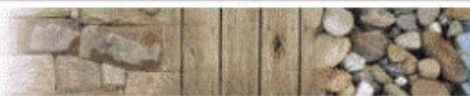
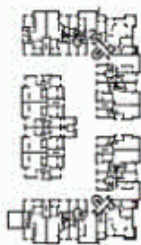
 0437 492 129

 rentals@morton.com.au

morton.com.au



The information contained herein is intended as an introduction to the general content of the project and is subject to variation. Interested parties should rely on their own enquiries and the contract for sale. The developer reserves the right to vary from these descriptions as it deems necessary or as any relevant authority may require.



THE WATERFRONT
AT HOMEBUSH BAY

3 BEDROOM

APARTMENT 212

TYPE B

INTERNAL AREA 113 sqm

OUTDOOR AREA 15 sqm

TOTAL AREA 128 sqm

CORFU