



# morton.

**WENTWORTH POINT** 37 Amalfi Drive

 1  1  1

Near new contemporary one bedroom apartment in waterfront estate adjacent to Sydney Olympic Park precinct. Open plan living, vogue decor, Italian timber floor, airconditioning, stone benchtops, gas cooktop, dishwasher, microwave, large north facing balcony, large bedroom with built-ins, undercover security parking plus storage. Access to Pulse Lifestyle Club, onsite cafe and restaurants, community bus to Strathfield Station and Rhodes Shopping Centre, short walk to Rivercat wharf and surrounded by 45 hectares of parklands, bushland and cycling tracks.

- \* Exceptional presentation
- \* Vogue decor
- \* Italian timber floor
- \* Airconditioning
- \* Sunny north aspect
- \* 24 hr security
- \* Indoor heated lap pool
- \* State of the Art gymnasium
- \* Tennis Courts

[morton.com.au](http://morton.com.au)

### View

As advertised or by appointment

### Agent

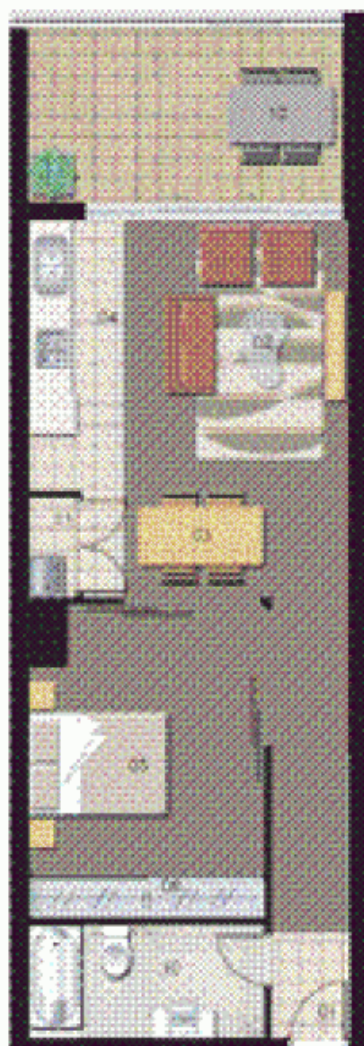
**Sarah Fowell**

 0437 492 129

 [rentals@morton.com.au](mailto:rentals@morton.com.au)

# SORRENTO

THE WATERFRONT  
AT ROYSTER BAY



0 1 2 3 4 5

ENTRY	03
LIVING	10
DINING	10
KITCHEN	04
BEDROOM 1	08
BEDROOM 2	10
BEDROOM 3	07

BALCONY	08
DECK	03
BATHROOM	05
LAUNDRY	07
BUILDING	10
STORAGE	03



## Unit 316

Unit Number	11
Type	1 Bedroom
Unit Area	65 sqm
Balance	12 years
Total	67 sqm

For more information on  
this project, visit [www.rmk.com.au](http://www.rmk.com.au)  
or contact us on 02 9550 1111

© 2011 RMK - Version 2.0

Robertson + Marks

