



morton.

WENTWORTH POINT 2 The Piazza

 1  1  1

Sunny North aspect private external terrace with raised garden - suit herb garden for the adventurous cook.

- * Spacious living room with enclosed kitchen
- * Bedroom flows to sunfilled terrace
- * Separate laundry with dryer
- * Basement parking with lift access
- * Audio/visual security intercom
- * Invest or occupy
- * Current lease expires 28th September, current rent \$385 p/w
- * Opportunity to join the Pulse Club with heated indoor lap pool, professional gym, tennis courts and resort style outdoor pool.
- * Cafes and restaurants on The Piazza

Strata Levies \$953 p/q
Council Rates \$219 p/q approx
Water Rates \$156 p/q approx

View

As advertised or by appointment

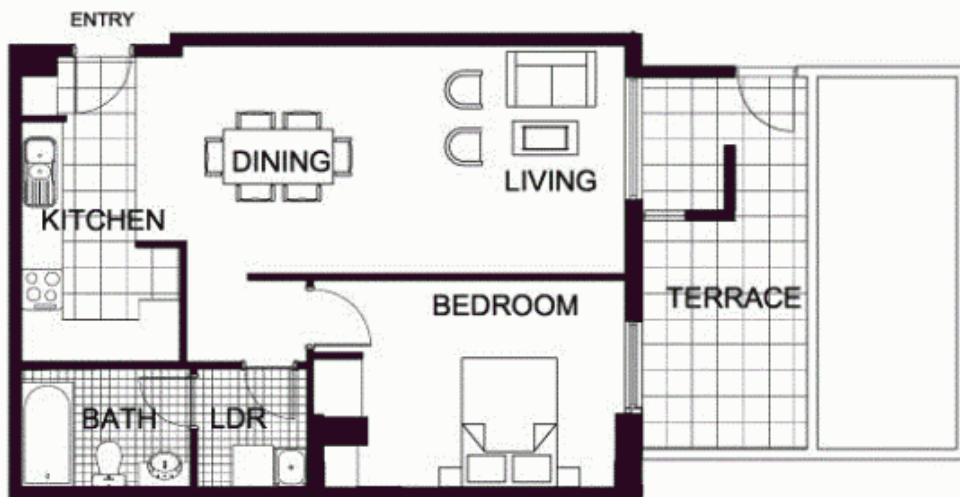
Agent

Sarah Fowell

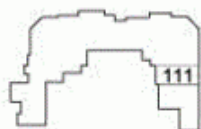
 0437 492 129

 rentals@morton.com.au

morton.com.au



"The information contained herein is intended as an introduction to the general content of the project and is subject to variation. Interested parties should rely on their own enquiries and the contract for sale. The developer reserves the right to vary from these descriptions as it deems necessary or as any relevant authority may require."



LEVEL 1



THE WATERFRONT
AT HOMEBUSH BAY

1 BEDROOM

APARTMENT 111

TYPE G

INTERNAL AREA 56sqm

OUTDOOR AREA 25sqm

TOTAL AREA 81sqm

MYKONOS