



# morton.

**WENTWORTH POINT** 1 The Piazza

 1  1  1

Well appointed one bedroom apartment on the 6th floor with outlook towards Sydney Olympic Park. Open plan living and dining with wrap around balcony to enjoy the open spaces, quality kitchen with s/steel appliances, gas cooking, dishwasher and microwave, bedroom with built ins and access to balcony, modern bathroom with bath seperate laundry with dryer, video intercom, lift access to security carspace. All facilities on site including tennis courts, indoor heated lap pool, gym, function centre, cafes. day spa, hairdresser, medical centre and community bus to Strathfield Station and Rhodes Shopping Centre.

Strata Levies \$772 pq approx  
Council Rates \$165 pq approx  
Water Rates \$122 pq approx

#### View

As advertised or by appointment

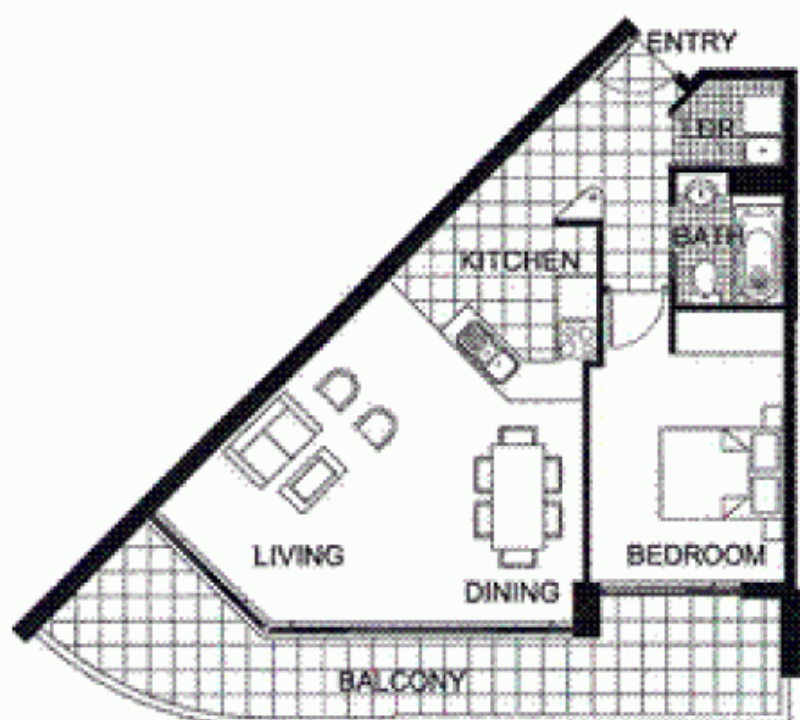
#### Agent

**Sarah Fowell**

 0437 492 129

 rentals@morton.com.au

[morton.com.au](http://morton.com.au)



0 1 2 3 4 5

The information contained herein is intended as an introduction to the general concept of the project and is subject to variation. Interested parties should rely on their own enquiries and the contract for sale. The Developer reserves the right to vary from these descriptions as it deems necessary or as any relevant authority may require.



**1 BEDROOM**

**APARTMENT 603**

**TYPE 1C**

INTERNAL AREA 55sqm

OUTDOOR AREA 17sqm

TOTAL AREA 72sqm



LEVEL 5

**CAPRI**