



# morton.

**WENTWORTH POINT** 6 Nuvolari Place

 2  2  2

Tidy spacious two bedroom, two bathroom apartment located on level seven of a premium quality building serviced by lift to secure basement parking and storage cage. Corner position with some water views and natural light on two elevations.

- \* District and water views
- \* Quality fittings and finishes
- \* Stainless steel appliances and stone bench tops
- \* Reverse cycle air conditioning
- \* Audio/visual intercom
- \* One Car park in secure basement
- \* Private outdoor pool and gym for building resident
- \* Access to Pulse Club with indoor and outdoor pools
- \* Tennis Courts, cafes and restaurants
- \* Vacant - rental estimate \$550 p/w

### View

As advertised or by appointment

### Agent

**Sarah Fowell**

 0437 492 129

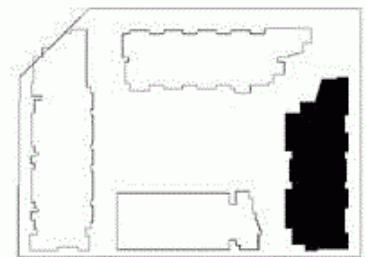
 [rentals@morton.com.au](mailto:rentals@morton.com.au)

[morton.com.au](http://morton.com.au)



- ENTRY 1
- LIVING 2
- DINING 3
- KITCHEN 4
- MAIN BEDROOM 5
- ENSUITE 6
- BEDROOM 2 7
- BATHROOM 8
- LAUNDRY 9
- LINEN 10
- BALCONY 11
- CLOTHES DRYING 12
- STORAGE 13

LEVEL 07



# PALERMO

UNIT: **709**

TYPE: 2 Bedroom

UNIT AREA: 96.0 sqm

OUTDOOR AREA: 14.0 sqm



Disclaimer: All layouts are indicative only, and subject to change.



0 2.5 5M