



# morton.

**WENTWORTH POINT** 4 The Crescent

2 2 1

Attractive well maintained apartment, split level 106 sqm with waterviews to Rhodes, five years old, high quality inclusions, stone benchtops, stainless steel appliances, bedrooms on each level, outdoor pool exclusive to building residents plus indoor heated lap pool, gym and tennis courts. Onsite Cafes, Restaurants, Day Spa, Doctor, Dentist, Pharmacy and Convenience Store.

- \* Premium building
- \* Five years old
- \* Bedrooms on each level
- \* High quality inclusions
- \* Outdoor pool to building residents
- \* Access to The Pulse Club lifestyle facilities
- \* Adjacent to Sydney Olympic Park
- \* Enjoy life at The Waterfront on Homebush Bay

Strata Levies \$1159 pq  
Council Rates \$ 205 pq approx  
Water Rates \$ 140 pq approx

**morton.com.au**

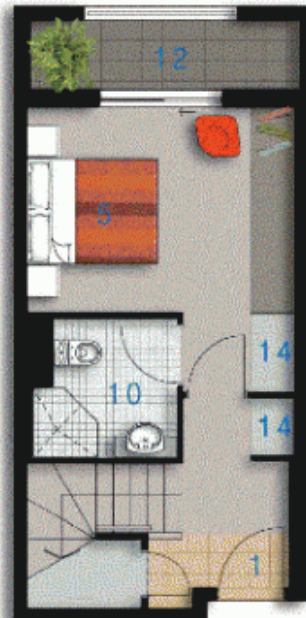
## View

As advertised or by appointment

## Agent

**Sarah Fowell**

0437 492 129  
rentals@morton.com.au

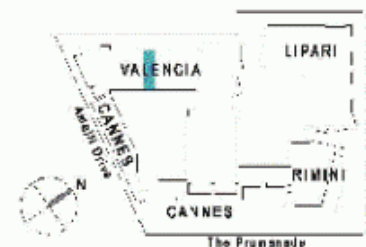


LOWER



UPPER

ENTRY	01
LIVING	02
DINING	03
KITCHEN	04
BEDROOM 1	05
BEDROOM 2	06
BATHROOM	08
ENSUITE	10
LAUNDRY	11
BALCONY	12
STORAGE	14
CLOTHES DRYING	15



## valencia

Unit 487

Lot Number	30
Type	2 Bedroom
Unit Area	90m <sup>2</sup>
Balcony	16m <sup>2</sup>
Total	106m <sup>2</sup>
Scale	1:100



Disclaimer: All layouts are indicative only, and subject to change.

0 2.5 5M