



morton.

WENTWORTH POINT 19 Hill Road

 2  2  1

Attractive spacious two bedroom apartment on levels 5 and 6 with outlook over parkland, never to be built out. Separate bedroom and living levels, modern contemporary finishes, main bedroom with ensuite, North West aspect balcony, under stair storage and storage cage in basement, audio/visual security intercom, lift access to basement parking. Opportunity to join "Pulse" Lifestyle Club with indoor and outdoor pools, professional gym and tennis courts. Adjacent to Sydney Olympic Park precinct and surrounded by 425 hectares of urban parkland, walking and cycling tracks.

Strata Levies \$1074 p/a
Council Rates \$230 p/q approx
Water Rates \$163 p/q approx

View

As advertised or by appointment

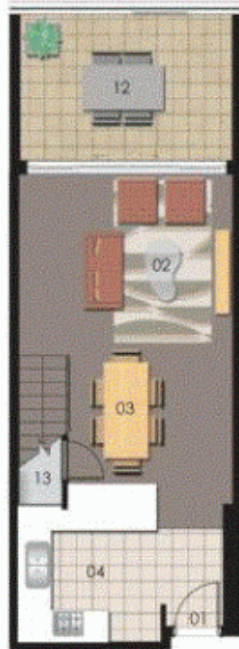
Agent

Sarah Fowell

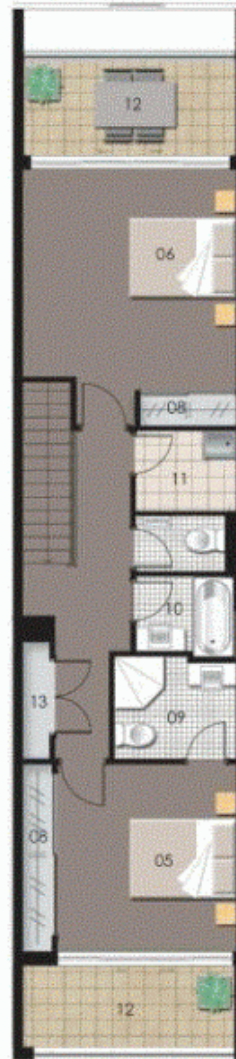
 0437 492 129

 rentals@morton.com.au

morton.com.au



LEVEL 5



LEVEL 6

0 1 2 3 4 5

ENTRY	01
LIVING	02
DINING	03
KITCHEN	04
BEDROOM 1	05
BEDROOM 2	06
BEDROOM 3	07

WARDROBE	08
ENSUITE	09
BATHROOM	10
LAUNDRY	11
BALCONY	12
STORAGE	13



Unit 507

Lot Number	11
Type	2 Bedroom
Unit Area	94 sqm
Balcony	24 sqm
Total	118 sqm