



morton.

WENTWORTH POINT 23 Savona Drive

 2  2  1

Review this spacious light and bright split level apartment in the highly regarded Palermo building with great sea breezes and cross flow ventilation.

- * Quality finishes and fittings
- * Air conditioned open plan living spaces
- * A bedroom on each level
- * Under stair storage
- * Audio/visual intercom
- * Basement car parking and storage cage
- * Outdoor pool and gym within the building
- * Access to Pulse resort pool, professional gym, indoor heated lap pool and tennis courts.
- * Restaurants and cafes on site

Strata Levies \$1076 p/q
Council Rates \$230 p/q approx
Water Rates \$163 p/q approx

View

As advertised or by appointment

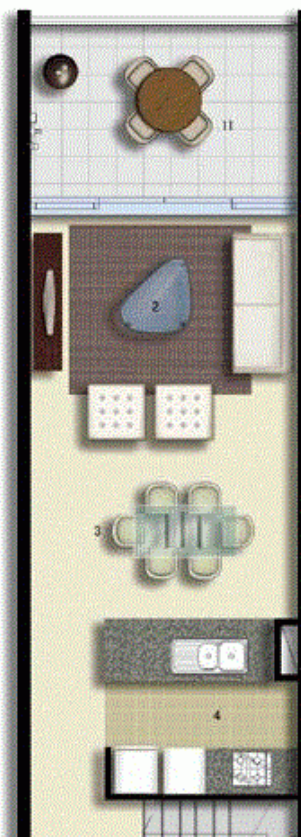
Agent

Sarah Fowell

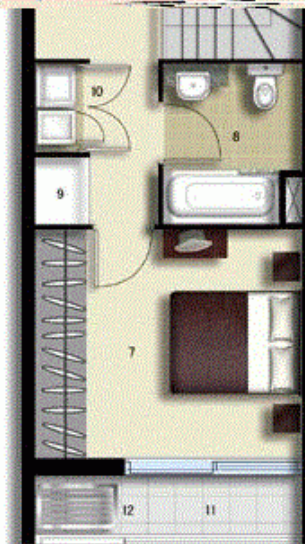
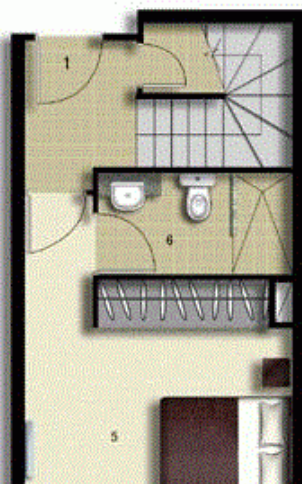
 0437 492 129

 rentals@morton.com.au

morton.com.au

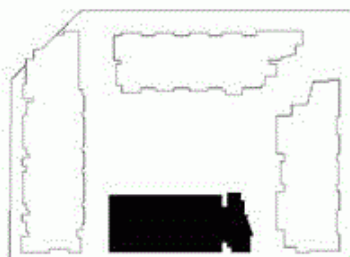


- ENTRY 1
- LIVING 2
- DINING 3
- KITCHEN 4
- MAIN BEDROOM 5
- ENSUITE 6
- BEDROOM 2 7
- BATHROOM 8
- LINEN 9
- LAUNDRY 10
- BALCONY 11
- CLOTHES DRYING 12



LEVEL 03

LEVEL 04



PALERMO

UNIT: **322**

TYPE: 2 Bedroom

UNIT AREA: 94.0 sqm

OUTDOOR AREA: 18.0 sqm



Disclaimer: All layouts are indicative only, and subject to change.

ALLEN JACK+COTTIER