



# morton.

**WENTWORTH POINT** 46 Almalfi Drive

 1  1  1

Stylish two year old apartment with large external terrace providing sun and light. Open plan living space, modern kitchen with stainless steel appliances and stone bench tops, bedroom with built ins, bathroom with bath and separate laundry with dryer. Access to all facilities including indoor heated pool, gym, steam room, tennis courts and lagoon style pool.

- \* Landscaped podium access from courtyard/terrace
- \* Quality easy maintenance finishes
- \* European style appliances
- \* Holland blinds
- \* Air conditioning
- \* Security basement parking plus storage cage
- \* First class investment or first home

Strata Levies \$620 p/q

### View

As advertised or by appointment

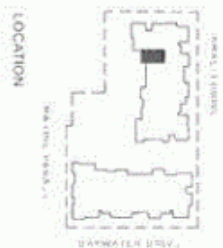
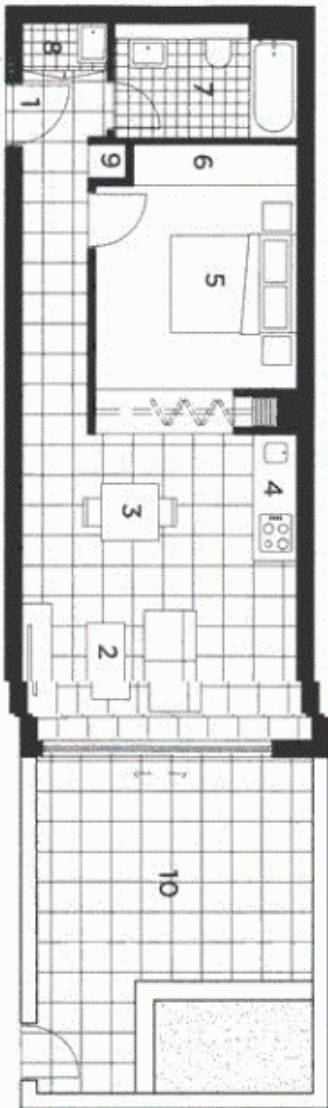
### Agent

**Sarah Fowell**

 0437 492 129

 rentals@morton.com.au

[morton.com.au](http://morton.com.au)



**UNIT 204  
STUDIO**

INTERNAL: 49 SQM  
 COURTYARD: 24 SQM  
 TOTAL AREA: 73 SQM

**KEY**

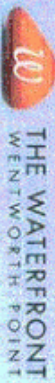
- 1 Entry
- 2 Living
- 3 Dining
- 4 Kitchen
- 5 Bedroom
- 6 Wardrobe
- 7 Bathroom
- 8 Laundry
- 9 Store
- 10 Courtyard

28.10.2010  
 REV. D



**MESSINA**  
 THE WATERFRONT

Building information and details are provided in the separate documents available on the project website. All information is subject to change without notice. All information is provided for general information only and does not constitute an offer or any other financial product. All information is provided for general information only and does not constitute an offer or any other financial product. All information is provided for general information only and does not constitute an offer or any other financial product.



**THE WATERFRONT**  
 WENTWORTH POINT