



morton.

WENTWORTH POINT 25 Bennelong Parkway

 3  2  2

Spacious three bedroom level 4 apartment, 167 sqm with North East aspect, perfect presentation, light and bright with natural ventilation and sea breezes. Open plan living spaces, modern kitchen, large balcony facing Homebush Bay, main bedroom with en suite, second bathroom with bath, separate laundry, two secure basement car spaces.

View

As advertised or by appointment

Agent

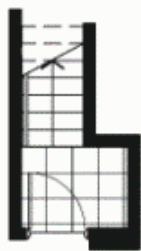
Sarah Fowell

 0437 492 129

 rentals@morton.com.au

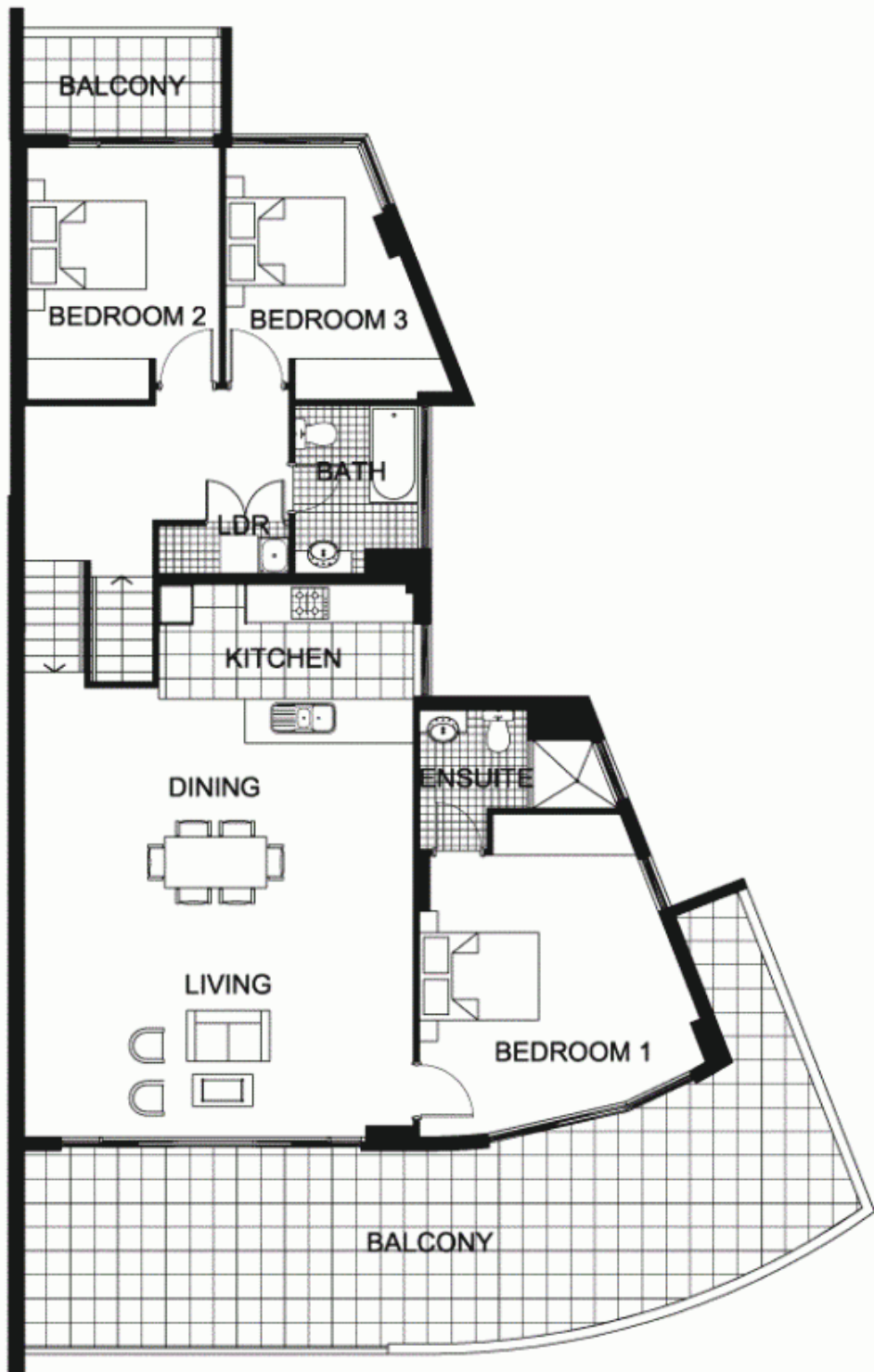
- * Front and rear balconies
- * District Views
- * Natural Light and cross ventilation
- * Quality fittings and finishes
- * Two car spaces within secure basement
- * Outdoor pool and recreation deck for building residents
- * Access to Pulse Club with indoor lap pool, gym, tennis courts, steam room and outdoor lagoon pool
- * Cafes and Restaurants on site
- * Surrounded by 425 hectares of urban parkland, cycling tracks and walkways

morton.com.au

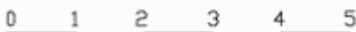


ENTRY

LEVEL 4.5



LEVEL 5



"The information contained herein is intended as an introduction to the general content of the project and is subject to variation. Interested parties should rely on their own enquiries and the contract for sale. The developer reserves the right to vary from these descriptions as it deems necessary or as any relevant authority may require."



3 BEDROOM

THE WATERFRONT
AT HOMEBUSH BAY

APARTMENT 441(Exist No.510)

INTERNAL AREA 121sqm

OUTDOOR AREA 46sqm

TOTAL AREA 167sqm



LEVEL 5

POSITANO