



# morton.

**WENTWORTH POINT** 3 Baywater Drive

 1  1  1

Well positioned in the Palermo building this immaculate one bedroom top floor apartment is complimented by an abundance of natural light, great outdoor space and generous living quarters.

- Spanning 76m2
- Large kitchen with CaesarStone bench tops
- 12m2 balcony
- Positioned on the top floor
- Northerly aspect
- Generous bedroom space
- Dual access balcony
- Plenty of storage
- Great value
- Car park with caged storage area
- Access to Pulse lifestyle facilities, walking tracks, cafes and Sydney Olympic park.

- Must be sold !

### View

As advertised or by appointment

### Agent

**Sarah Fowell**

 0437 492 129

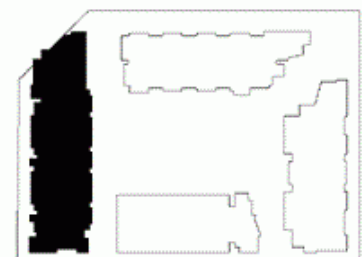
 rentals@morton.com.au

[morton.com.au](http://morton.com.au)

|                |    |
|----------------|----|
| ENTRY          | 1  |
| LIVING         | 2  |
| DINING         | 3  |
| KITCHEN        | 4  |
| BEDROOM        | 5  |
| BATHROOM       | 6  |
| LAUNDRY        | 7  |
| STUDY          | 8  |
| BALCONY        | 9  |
| CLOTHES DRYING | 10 |



LEVEL 08



## PALERMO

UNIT: **863**

TYPE: 1 Bedroom

UNIT AREA: 64.0 sqm

OUTDOOR AREA: 12.0 sqm



Disclaimer: All layouts are indicative only, and subject to change.

ALLEN JACK+COTTIER



0 2.5 5M