



morton.

Redfern 767 South Dowling Street

 4  2  1

Surprisingly peaceful and privately set behind an intimate facade that opens to reveal vast period proportions, this exceptional c1890s Victorian terrace is a family home of historic character and unrivalled versatility. On an impressive 329sqm with dual street access, this is an offering of extraordinary quality.

- Opening to embrace the light of a northern aspect
- Flexible interiors allow for numerous configurations
- Potential as one home or two separate apartments
- Designer appointments blend with original features
- Sun-washed walled garden and entertaining courtyard
- Chic granite induction kitchen, double glazing
- Study, vestibule, soaring ceilings and polished floors
- Formal and casual entertaining areas, rear garage

View

As advertised or by appointment

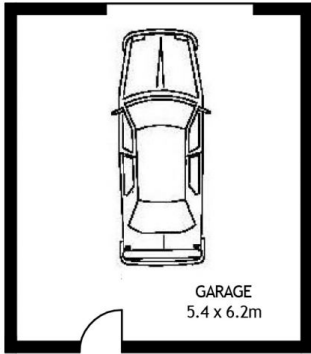
Agent

Ettiene West

 0410 593 749

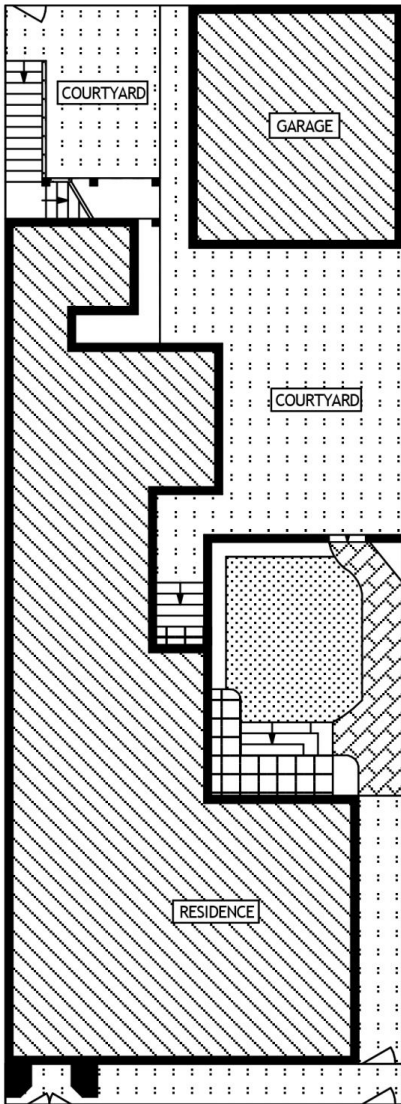
 ettiene@morton.com.au

morton.com.au

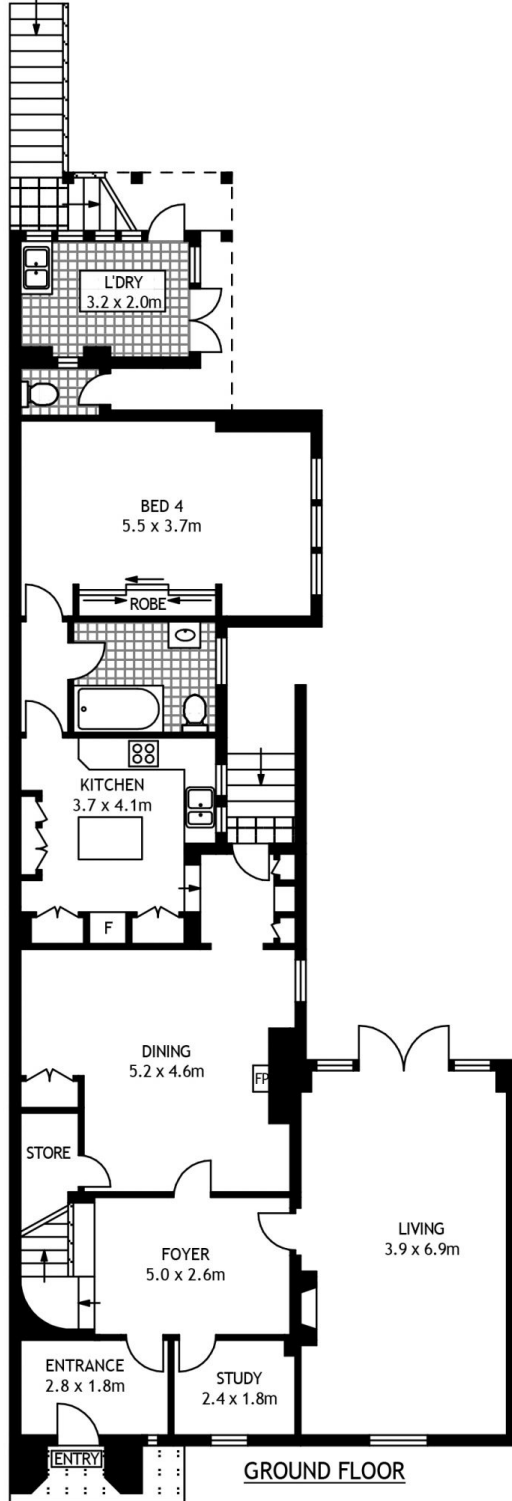


GARAGE
5.4 x 6.2m

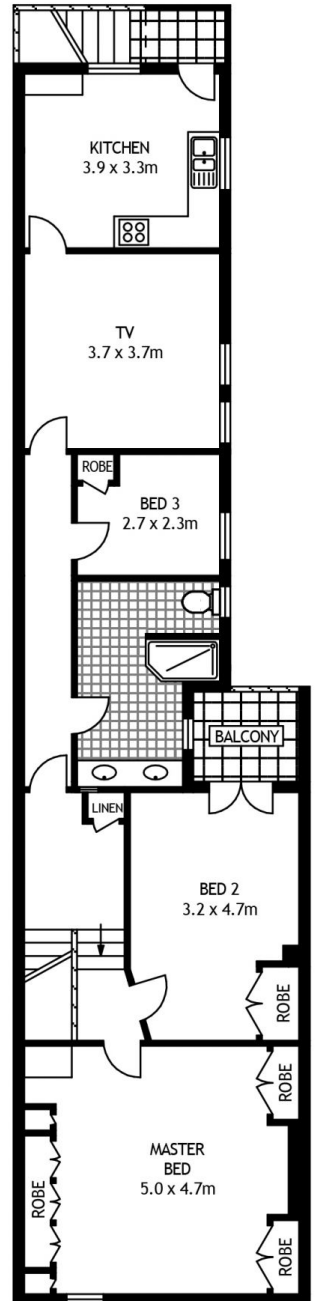
GROUND FLOOR



SITE PLAN



GROUND FLOOR



FIRST FLOOR

