



morton.

Sydney 2601/157 Liverpool Street

🛏 3 🚿 3 🚗 2

Dominated by sensational views that stretch uninterrupted across the manicured expanse of Hyde Park to the sparkling harbour waters and beyond to North Head, this stunning apartment defines luxurious park side living. Well proportioned and desirably low maintenance, it is but moments to world class shopping, restaurants and attractions.

- Oriented to embrace the light of a northern aspect
- Spacious open plan living, floor to ceiling windows
- Double bedrooms, master has ensuite
- Chic CaesarStone kitchen with Miele gas appliances
- Private balcony and secure double parking
- Powder room, ample storage and air conditioning
- 25m infinity pool, gym, sundeck and a 24hr concierge

View

As advertised or by appointment

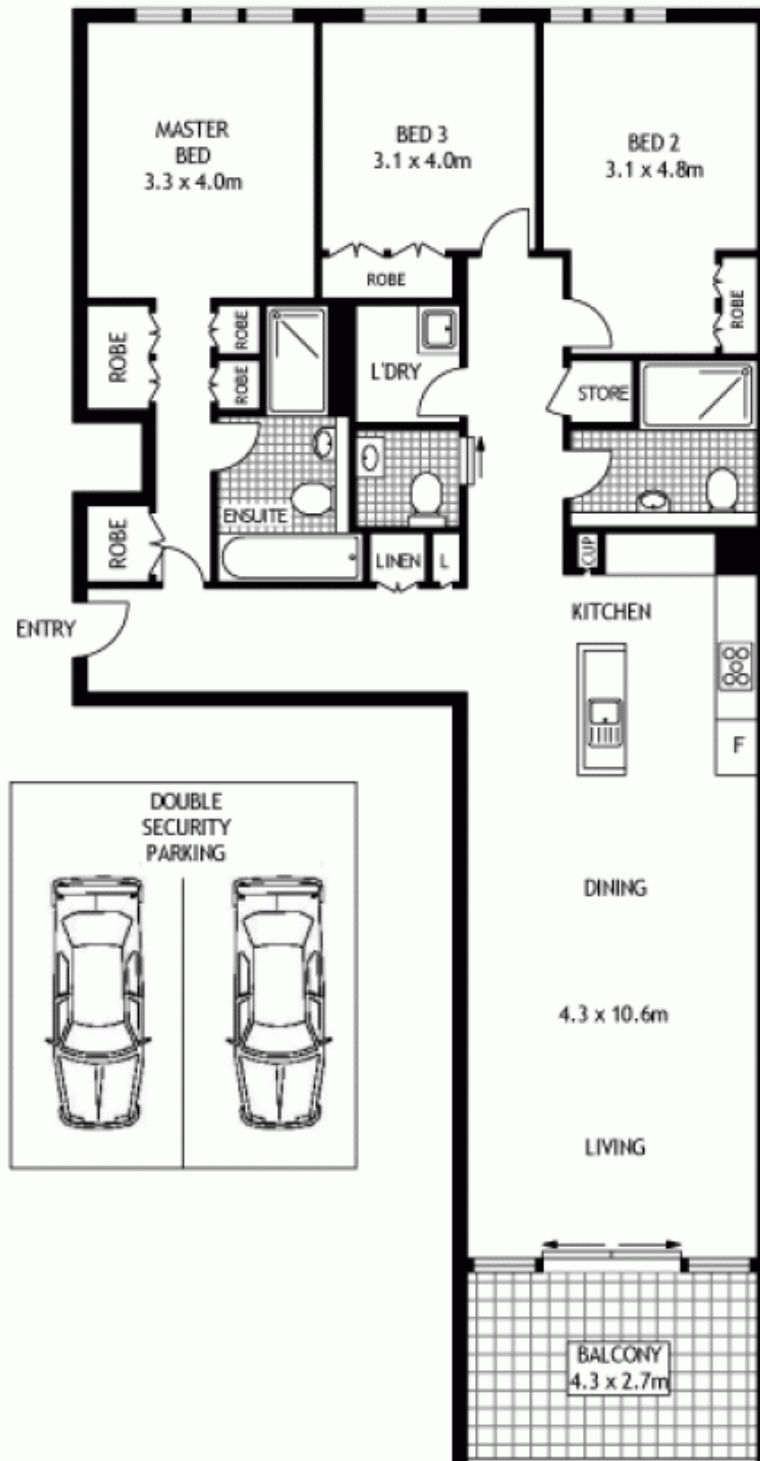
Agent

Ettiene West

📞 0410 593 749

✉ ettiene@morton.com.au

morton.com.au



TWENTY SIXTH FLOOR

2601/157 LIVERPOOL STREET

SYDNEY

SCAPE Floor Planing Disclaimer: This floor plan is conceptual only. It is provided for illustrative purposes only and should not be relied upon. We make no guarantees to the correctness of this plan. All interested parties should make and rely on their own enquiries in determining the accuracy of the information contained in this floor plan.