



**morton.**

**Sydney** 512/45 Shelley Street

 2  2  1

With fantastic city views, this apartment is desirably located for harbour living and is luxuriously appointed. Setting the benchmark for effortless living this apartment offers plenty of space and privacy and is just moments away from the King Street Wharf precinct, CBD, restaurants, cafes and bars.

- Large open plan living
- Gourmet kitchen
- Smeg appliances
- East facing balcony
- Double bedrooms with built ins
- Internal laundry, video intercom
- Secure parking

**View**

As advertised or by appointment

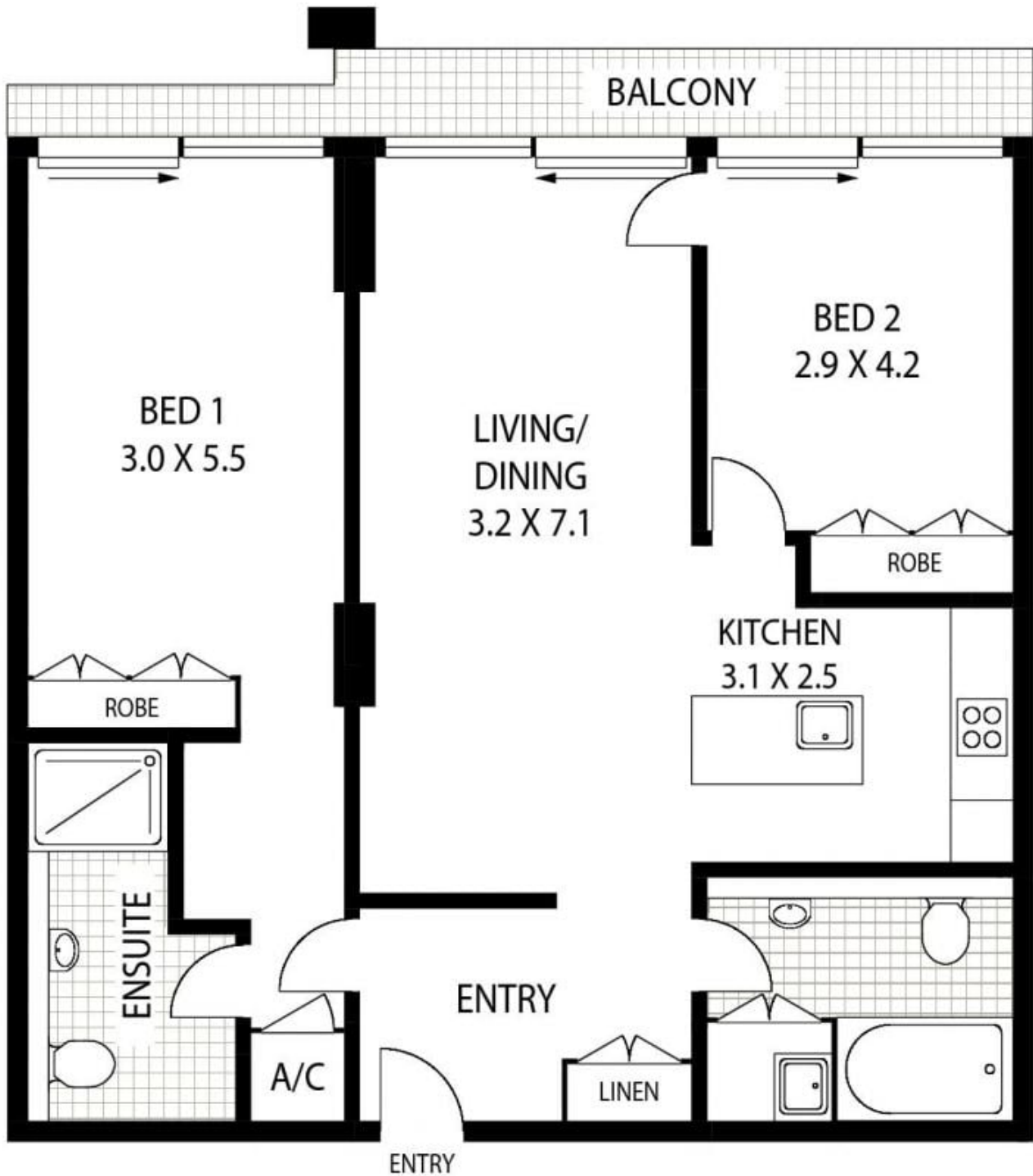
**Agent**

**Ettiene West**

 0410 593 749

 ettiene@morton.com.au

**morton.com.au**



NOTE :- SINGLE SECURITY PARKING



512/45 SHELLEY STREET

SYDNEY

Floor plan supplied by [www.thepicturedesk.com.au](http://www.thepicturedesk.com.au). This floor plan is provided for indicative purposes only. Measurements are approximate and not to scale. The vendor, agency and supplier will accept no liability for its accuracy. Interested parties are advised to make their own independent enquiries.