



morton.

Edgecliff 4/450 Edgecliff Road

 3  2  1

Privately and peacefully set well back from the street in a tightly-held boutique community of just ten, this exceptional residence is a timeless offering of elegance and grandeur. Impressively well proportioned and beautifully presented, it is merely a short stroll to the conveniences of Edgecliff Village.

- Immaculately maintained with the finest appointments
- Effortlessly melding traditional grace and modern style
- Generous interiors with an intuitively configured plan
- Invitingly spacious separate lounge and dining rooms
- Double bedrooms, built-in wardrobes, large sunroom
- With no common walls, only two apartments per floor
- Sleek gas kitchen complete with CaesarStone benches
- Hardwood floors, high ceilings and plantation shutters
- Lift access to apartment and basement parking
- Gas fireplace, entrance foyer, secure parking space

View



As advertised or by appointment

Agents

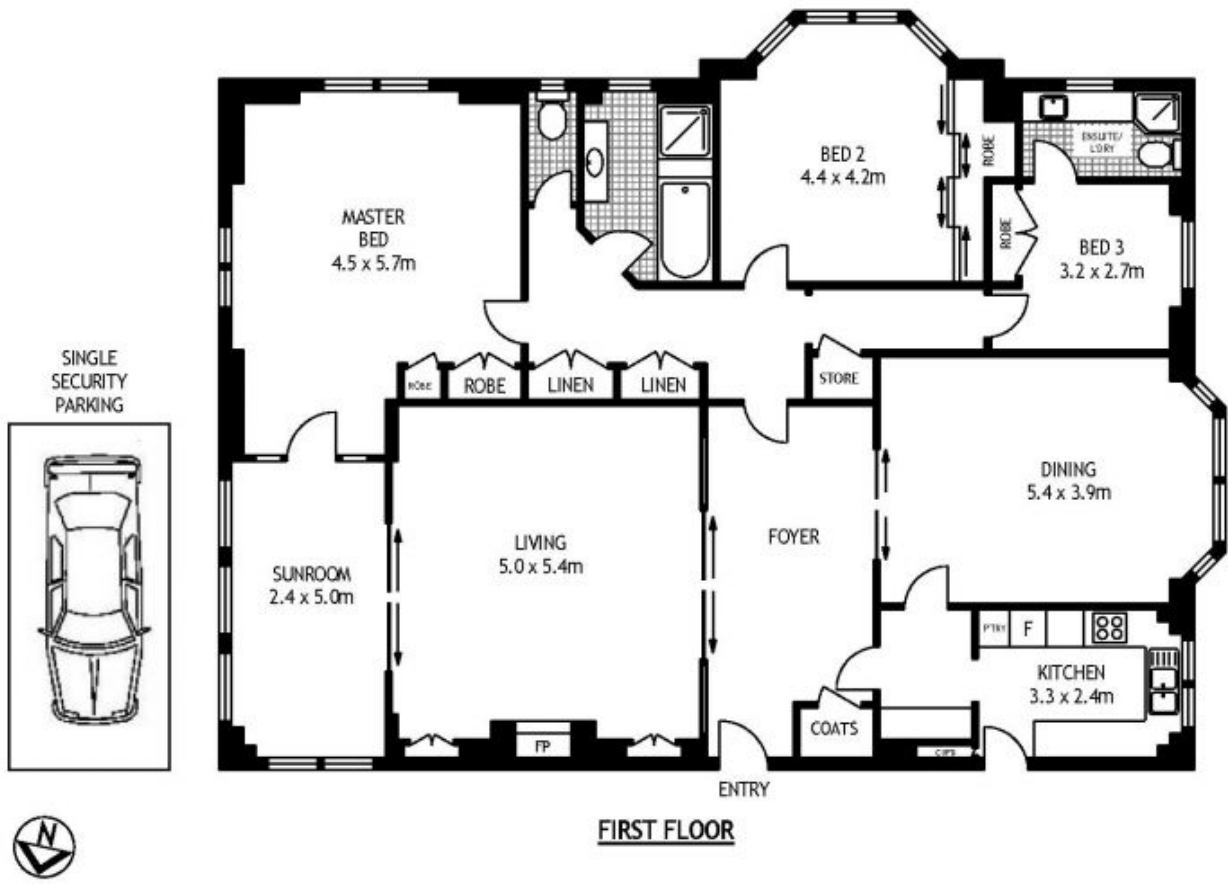
Sarah Fowell

 sarah@morton.com.au

Ettiene West

 0410 593 749
 ettiene@morton.com.au

morton.com.au



4/450 EDGECLIFF ROAD

EDGECLIFF

SCAPE Floor Planing Disclaimer: This floor plan is conceptual only. It is provided for illustrative purposes only and should not be relied upon. We make no guarantees to the correctness of this plan. All interested parties should make and rely on their own enquiries in determining the accuracy of the information contained in this floor plan.