



**morton.**

**Sydney** 708/23 Shelley Street

 2  2  1

Offering unrivalled convenience and unquestionable quality in an exclusive setting no more than a short walk to the heart of the central business district, this ultra stylish 86sqm apartment combines understated contemporary finishes with inviting proportions for a secure low maintenance lifestyle.

- Level 7, stunning outlook across Darling Harbour
- Filled with the light of a north-western perspective
- Combined open plan entertaining, large balcony
- Chic kitchen, gas appliances, CaesarStone benches
- Master bedroom comes with an ensuite, walk-in robe
- Floor to ceiling glass, two storage cages and concierge
- Pool, gymnasium and a common barbecue area

#### View

As advertised or by appointment

#### Agents

**Sarah Fowell**



sarah@morton.com.au

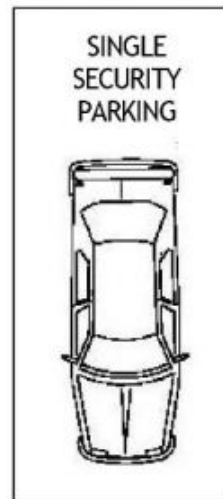
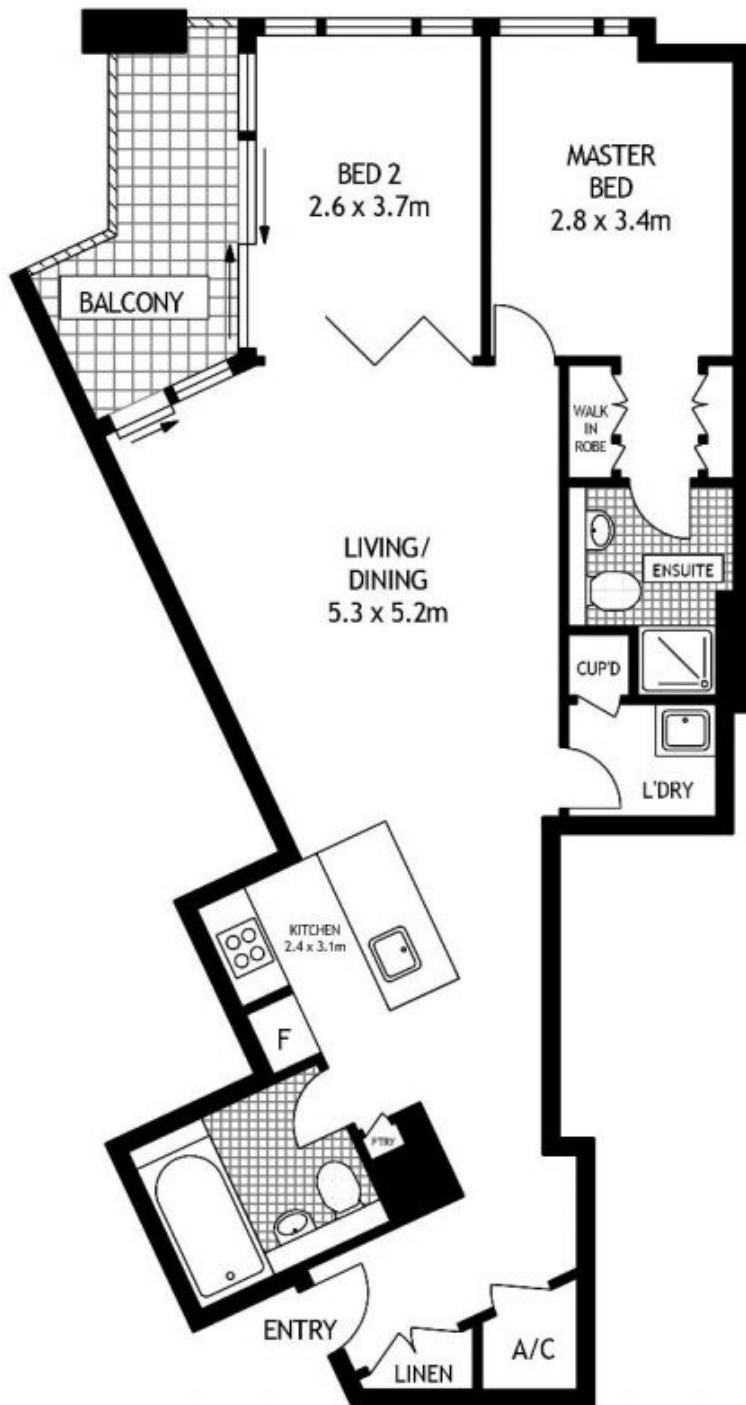
**Ettiene West**



0410 593 749

ettiene@morton.com.au

**morton.com.au**



**2 x 2sqm storage cages  
= total 4sqm**

**SEVENTH FLOOR**



**708/23 SHELLEY STREET**

**SYDNEY**

SCAPE Floor Planing Disclaimer: This floor plan is conceptual only. It is provided for illustrative purposes only and should not be relied upon. We make no guarantees to the correctness of this plan. All interested parties should make and rely on their own enquiries in determining the accuracy of the information contained in this floor plan.