



morton.

Surry Hills 1309/20 Pelican Street

 3  3  2

Flowing over two impressive levels and a remarkable 231sqm, this extraordinary residence defines luxury inner city living. The largest apartment in what is generally considered to be one of the finest addresses in Sydney, the interiors open to embrace breathtaking views that stretch uninterrupted to the harbour.

- Extremely spacious lifestyle of refinement and quality
- Flooded with the light of a north-eastern perspective
- Vast living areas flow effortlessly to a massive terrace
- Palatial master has ensuite and huge walk-in wardrobe
- Floor to ceiling windows, beautiful CaesarStone kitchen
- Study, ducted air, storage, soaring ceilings, balconies
- Manicured gardens, heated pool and gym
- Concierge and 7sqm storeroom

View

As advertised or by appointment

Agents

Sarah Fowell



sarah@morton.com.au

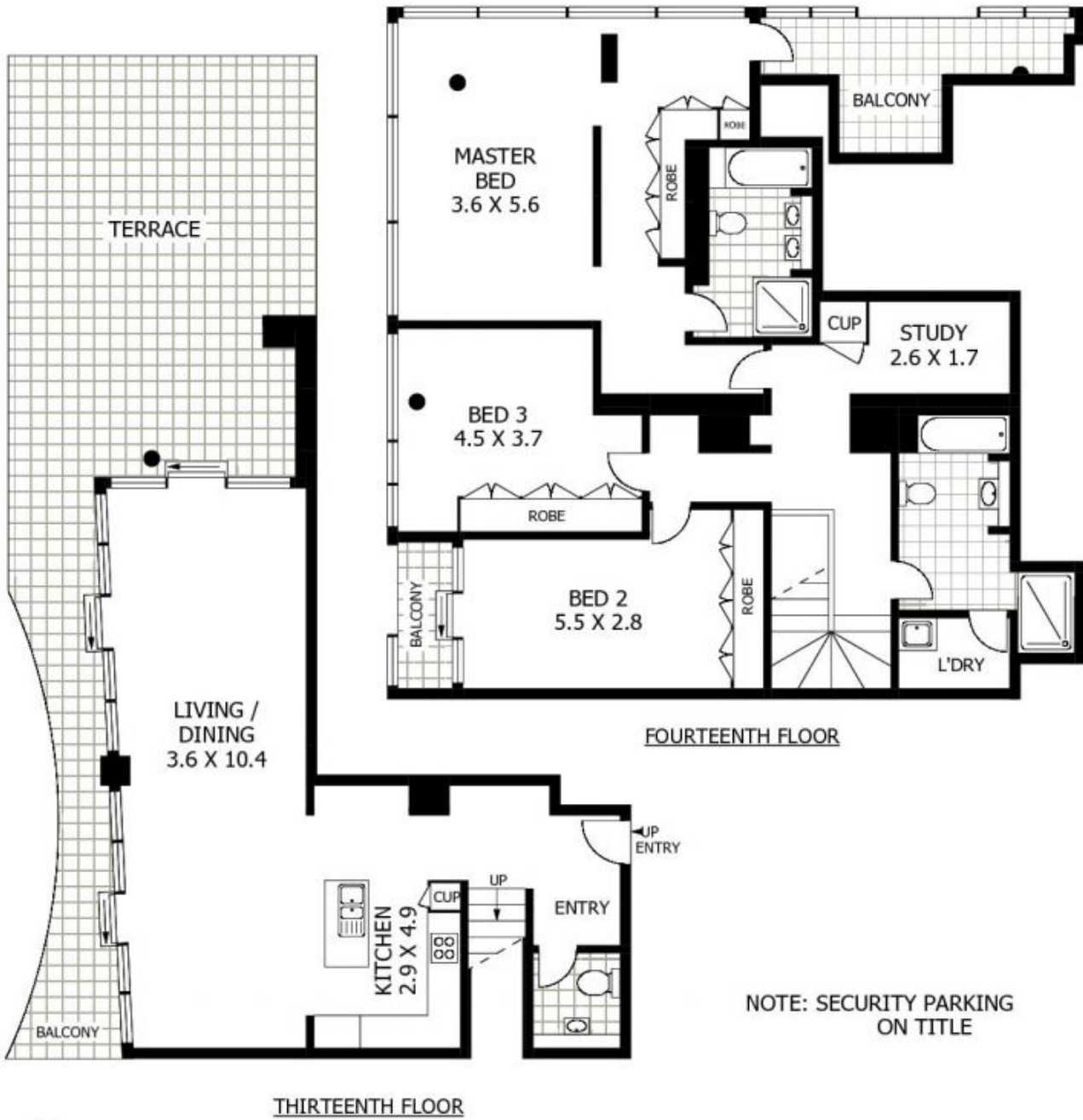
Ettiene West



0410 593 749

ettiene@morton.com.au

morton.com.au



1309/20 PELICAN STREET SURRY HILLS

SCAPE Floor Planning Disclaimer: This floor plan is conceptual only. It is provided for illustrative purposes only and should not be relied upon. We make no guarantee as to the correctness of this plan. All interested parties should make and rely on their own enquiries in determining the accuracy of the information contained in this floor plan.