



morton.

SYDNEY 303/281 Elizabeth Street

2 2 1

This immaculately presented two-bedroom, two-bathroom apartment in the coveted Regency Hyde Park offers 102 square metres of elegance and luxury, with immediate access to a vast range of Sydney's entertainment, dining and shopping activities plus secure parking.

Featuring two spacious bathrooms with marble tiles, a gourmet kitchen with granite benchtops and Blanco appliances, and a generous master bedroom with parkland views, this air-conditioned apartment affords a tasteful and stylish lifestyle in the hub of the city.

The large open-plan living and dining area flows to a small, covered balcony that is perfect for contemplating the street life below. The building also offers resort-style facilities a twenty metre pool and spa, gymnasium and saunas.

Museum Station and Hyde Park are within metres of the front door and a wide selection of cafs, bars, theatres, museums and restaurants are just moments away. Pitt Street Mall,

View

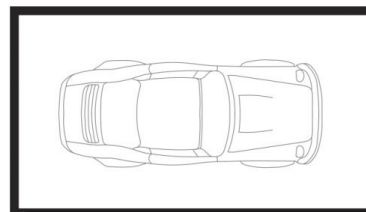
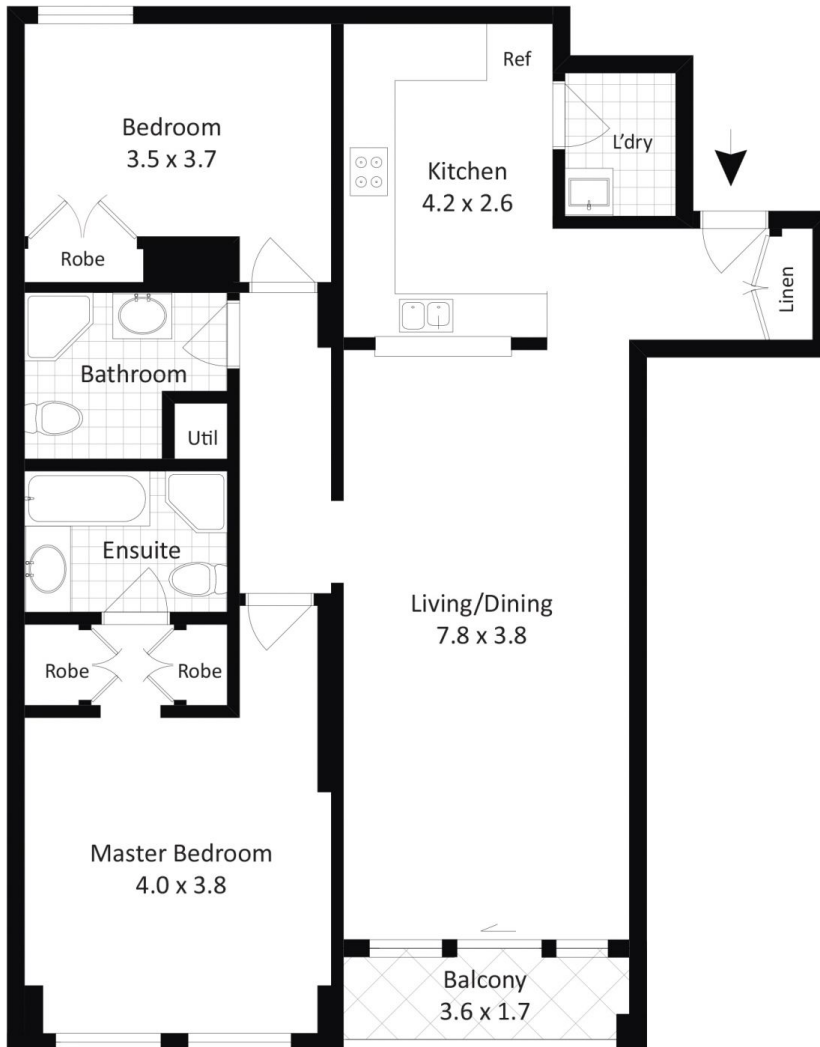
As advertised or by appointment

Agent

Morton RE

info@morton.com.au

morton.com.au



Secure Car Space

303, 281 Elizabeth Street, Sydney

WILSON *w.p.* PROPERTY
AGENTS

The information above is provided in good faith and has been provided to us from a variety of sources. We have not verified whether the information is accurate and do not have any belief one way or the other in its accuracy. We do not accept any responsibility to any person for its accuracy and do no more than pass it on. All interested parties should rely on their own inquiries in order to determine whether or not this information is in fact accurate.