



# morton.

**SYDNEY** 1606/281 Elizabeth Street

 1  1

This superbly presented one bedroom city pad combines comfort and convenience with access to the best of Sydney's entertainment, dining and shopping activities. Positioned opposite the lush oasis of Hyde Park, this immaculate apartment affords a stylish city lifestyle to the young professional or an astute investment opportunity.

Features include:

- Generous, open-plan dining and living area flowing to small balcony with city skyline views
- Functional kitchen with granite benchtops, servery, Blanco oven and cooktop
- Good sized bedroom with walk-in robe and ensuite
- Second separate powder room, internal laundry and ducted air conditioning
- Fifty metres from Museum Station and Hyde Park at the front door
- Immediate access to a wide selection of cafes, bars, theatres, museums and restaurants, Pitt Street Mall, Westfield, World Square, Town Hall, Darling Harbour and Chinatown

[morton.com.au](http://morton.com.au)

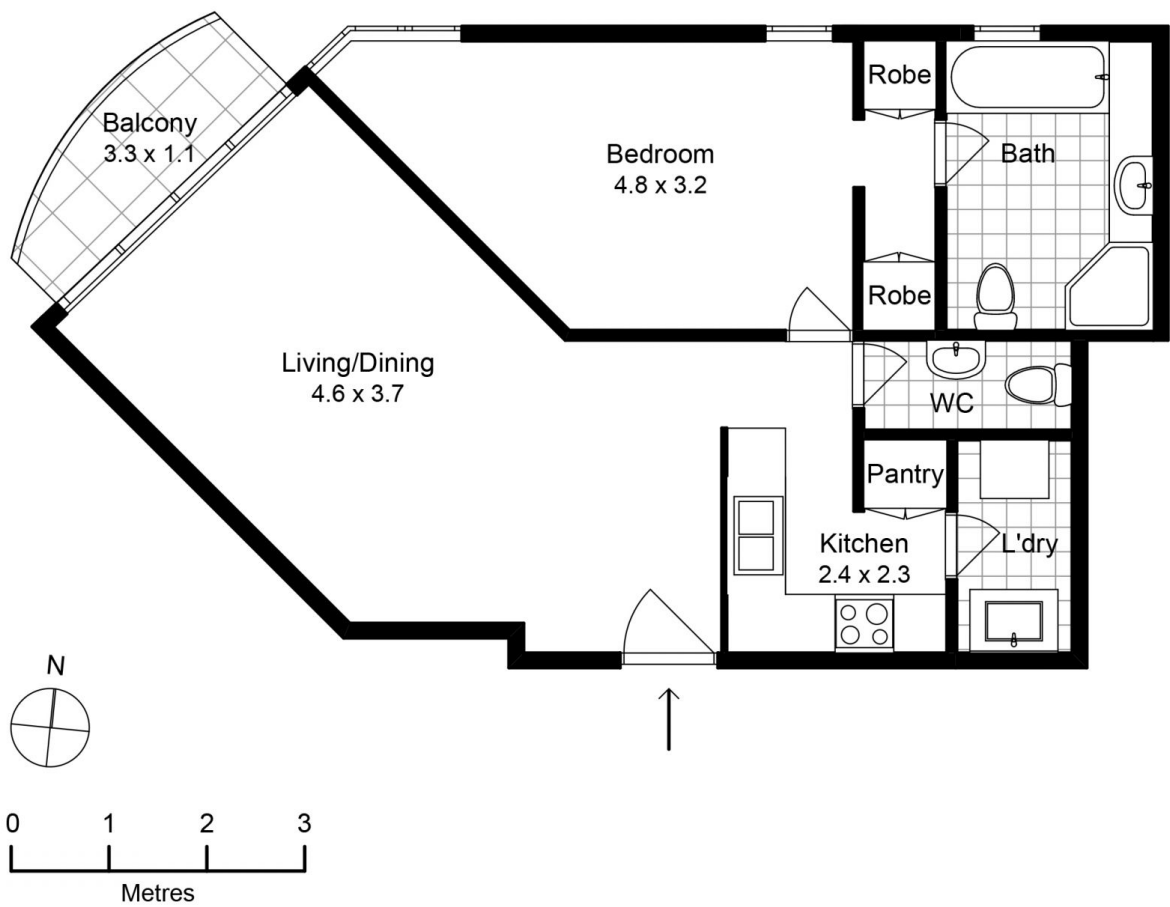
**View**

As advertised or by appointment

**Agent**

**Morton RE**

 [info@morton.com.au](mailto:info@morton.com.au)



1606/281 Elizabeth Street, Sydney

WILSON *up.* PROPERTY  
 AGENTS

The information above is provided in good faith and has been provided to us from a variety of sources. We have not verified whether the information is accurate and do not have any belief one way or the other in its accuracy. We do not accept any responsibility to any person for its accuracy and do no more than pass it on. All interested parties should rely on their own inquiries in order to determine whether or not this information is in fact accurate.