



morton.

SYDNEY 201/281 Elizabeth Street

 2  2  1

Overlooking the lush expanse of Hyde Park, this immaculate two-bedroom, two bathroom apartment in the coveted Regency Hyde Park presents a rare combination elegance and convenience, offering immediate access to a vast range of Sydneys entertainment, dining and shopping activities.

Featuring two spacious bathrooms with marble tiles, a gourmet kitchen with granite benchtops and stainless-steel appliances, and a generous master bedroom with parkland views, this 100-square-metre, air-conditioned apartment affords a tasteful and stylish lifestyle in the hub of the city.

The large open-plan living and dining area flows to a small, covered balcony that is perfect for contemplating the street life below. Immediately adjacent to the apartment are the resort-style facilities a twenty metre pool and spa, gymnasium and saunas.

Museum Station and Hyde Park are within metres of the front door and a wide selection of cafs, bars, theatres, museums

View

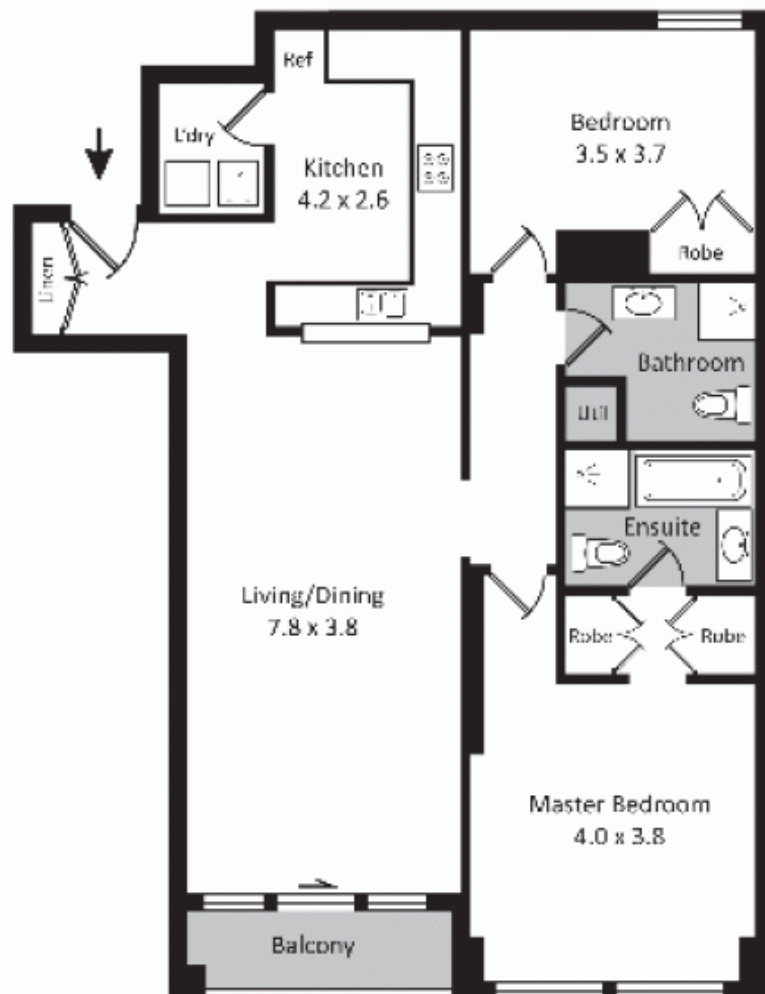
As advertised or by appointment

Agent

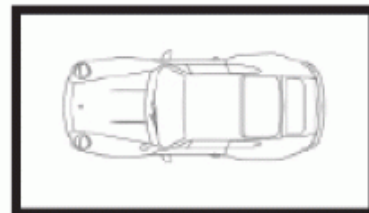
Morton RE

 [info@morton.com.au](tel:)

morton.com.au



0 1 2 3
Metres



Secure Car Space

201, 281 Elizabeth Street, Sydney

WILSON *w.p.* PROPERTY
AGENTS

The information above is provided in good faith and has been provided to us from a variety of sources. We have not verified whether the information is accurate and do not have any belief one way or the other in its accuracy. We do not accept any responsibility to any person for its accuracy and do no more than pass it on. All interested parties should rely on their own inquiries in order to determine whether or not this information is in fact accurate.