



morton.

Sydney 305/187 Liverpool Street

 1  1  1

Be one of the select few to experience city living at its best. A rare opportunity exists to secure this over sized, north facing, one bedroom apartment with parking in this iconic Sydney development known as The Connaught.

Spread over 88sqm, the average size of a city two-bed apartment, sitting above the tree line of historic Hyde Park this is an opportunity not to be missed.

Featuring floor to ceiling windows and sliding doors in both living and bedroom opening onto covered balcony, perfect for the entertainer or watching the sun go down over the city skyline.

The floor plan comprises of large open plan living/dining room with mirrored feature wall, spacious kitchen, travertine marble bathroom with separate shower and bath, internal laundry, hallway storage and a good sized bedroom with built-in wardrobes.

View

As advertised or by appointment

Agent

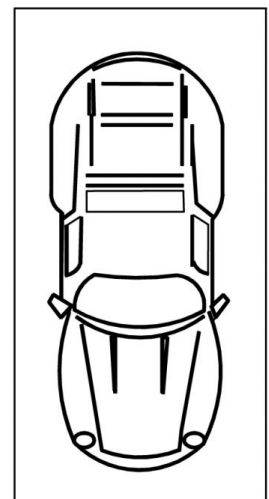
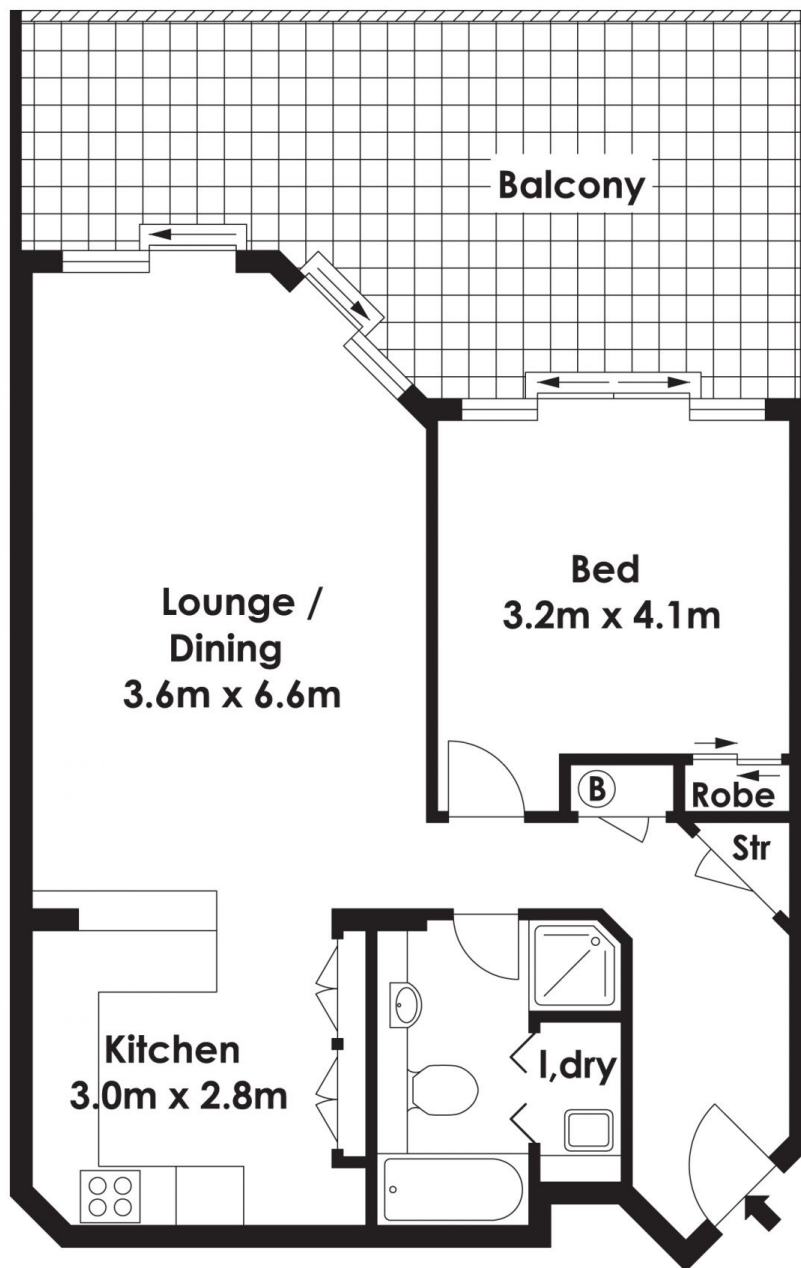
Morton RE

 [02 9550 0000](tel:0295500000)
 info@morton.com.au

morton.com.au



305/187 Liverpool Street, Sydney



Single Car Space

The information above is provided in good faith and has been provide to us from a variety of sources. We have not verified whether the information is accurate and do not have any belief one way or other in its accuracy. We do not accept any responsibility to any person for its accuracy and do no more than pass it on. All interested parties should rely on their own inquiries in order to determine whether or not this information is in fact accurate.