



morton.

SYDNEY 307/187 Liverpool Street

 2  2  1

This one-of-a-kind 112sqm two bedroom apartment in The Connaught captures the elegance and style of a sophisticated pied-a-terre located in the heart of Sydney City overlooking the park.

Positioned on level three with covered entertaining balcony this property captures intimate leafy views directly into Hyde Park offering a sheltered and private enclave of north facing greenery.

With plenty of scope to renovate and improve, the comfortable living/dining area features wall to ceiling mirrors enhancing the vibrant canopy of Hyde Park.

A good sized kitchen and two marble bathrooms are in tidy but original condition and could easily be updated to provide a modern wow factor for owner occupiers, or enhance the rental return for investors.

Accommodating two bedrooms, both with built-ins and access

View

As advertised or by appointment

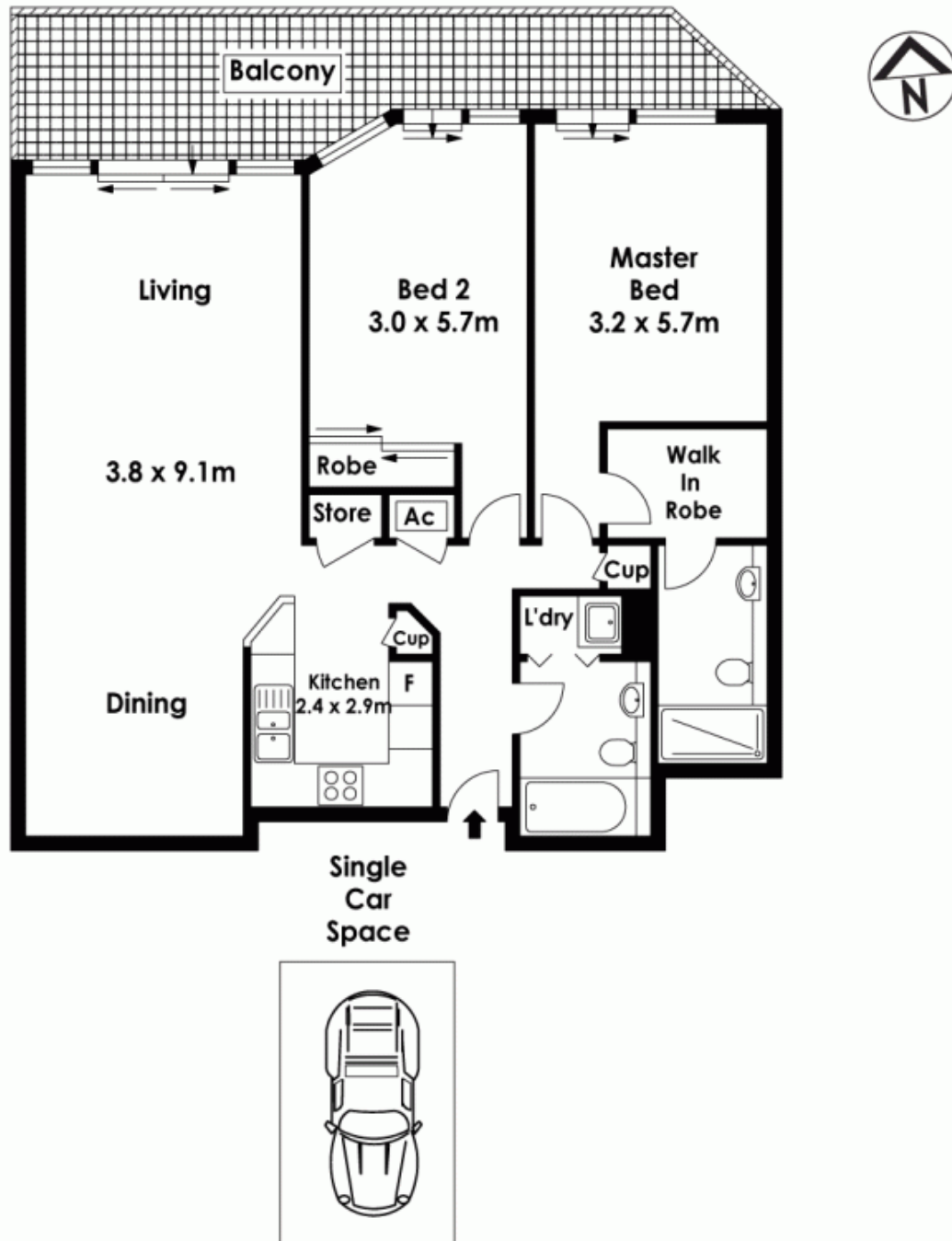
Agent

Morton RE

 [info@morton.com.au](tel:)

morton.com.au

307/187 Liverpool Street, Sydney



The information above is provided in good faith and has been provide to us from a variety of sources. We have not verified whether the information is accurate and do not have any belief one way or other in its accuracy. We do not accept any responsibility to any person for its accuracy and do no more than pass it on. All interested parties should rely on their own inquiries in order to determine whether or not this information is in fact accurate.