



morton.

PYRMONT 139/2 Wattle Crescent

 2  2  1

This fantastic 109sqm two bedroom apartment is positioned on Level 7 of Parkview Tower building and offers a leafy green outlook with all the conveniences of inner-city living.

The open plan layout accommodates two separate areas for living and dining with easy access to the entertainer's kitchen with granite bench tops, gas cooking and stainless steel appliances.

A wintergarden leads off the living area and onto a balcony which is also accessible from two bedrooms. Both bedrooms include built-in robes and the master bedroom provides tiled ensuite.

Additional features include secure parking space, split system air conditioning, security intercom, building manager, pool, gymnasium, sauna and BBQ area.

Located moments from vibrant Pyrmont village on Harris Street, Wentworth Park, Light rail, Busses, the Fish Markets

morton.com.au

View

As advertised or by appointment

Agent

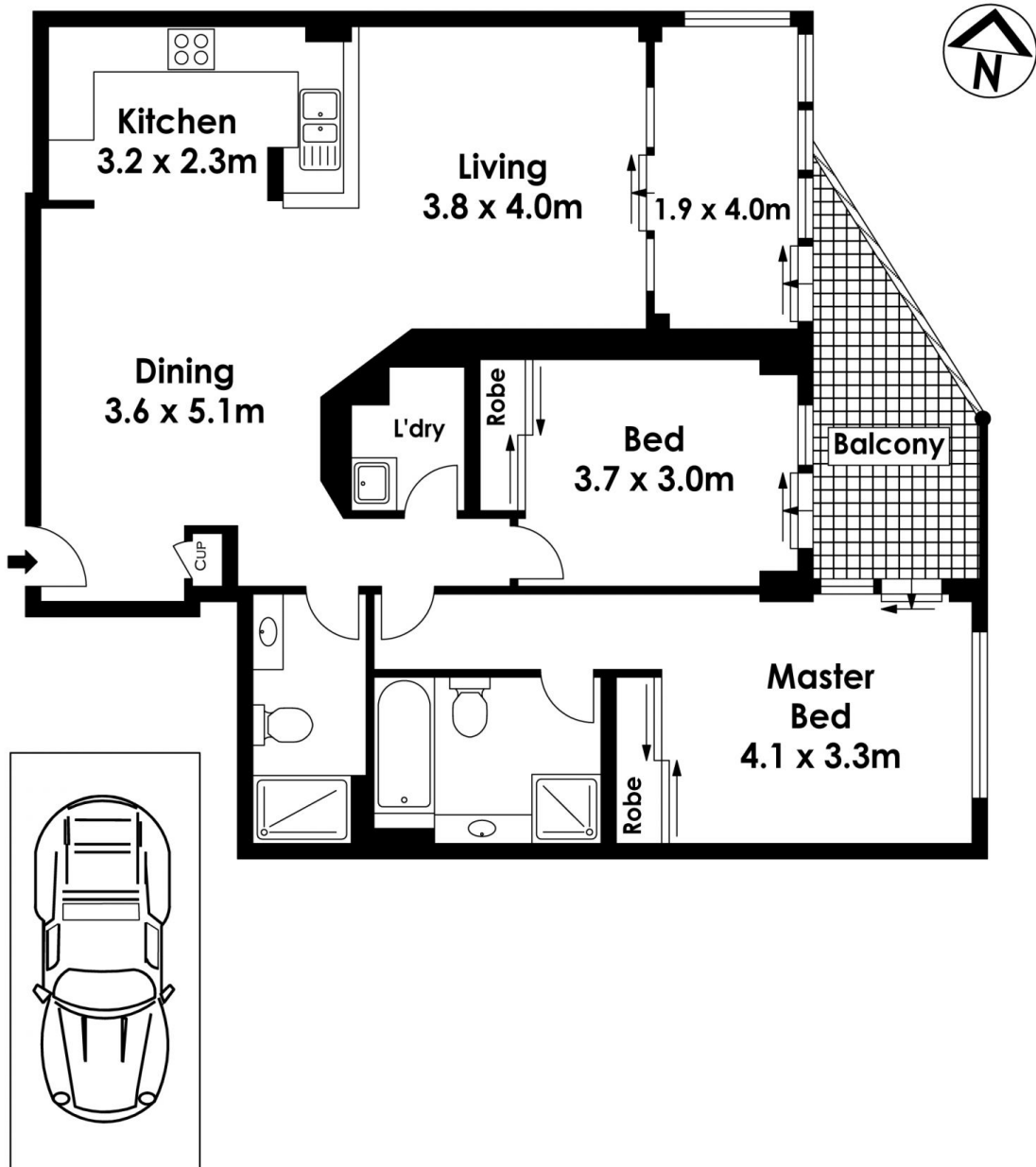
Morton RE



 info@morton.com.au



139/2 Wattle Crescent, Pymont



Single
Car
Space

The information above is provided in good faith and has been provide to us from a variety of sources. We have not verified whether the information is accurate and do not have any belief one way or other in its accuracy. We do not accept any responsibility to any person for its accuracy and do no more than pass it on. All interested parties should rely on their own inquiries in order to determine whether or not this information is in fact accurate.