



morton.

SYDNEY 2802/157 Liverpool Street

 3  3  2

From the moment you walk into this quite exceptional apartment you will be submersed by the magnificent panoramic vista. This particular floor plan has one of the widest northern frontages that offer spectacular views across Hyde Park, over St Marys Cathedral and way beyond to Sydney Harbour; these are some of the best views in the world. Therefore it is not that surprising that this is one of the most sought after residential developments in Sydney.

The Hyde was designed by multi award-winning architects WOHA and this stunning home is situated on the level 28. The apartment measures 169 square metres including private covered balcony and comprises living room with plenty of space for living and dining plus the exquisite open plan kitchen which is a delight allowing for great social interaction. The spacious master bedroom comes with an abundance of built-in wardrobes plus en-suite bathroom, the second bedroom also has built in wardrobes and en-suite shower, third bedroom with built ins.

View

As advertised or by appointment

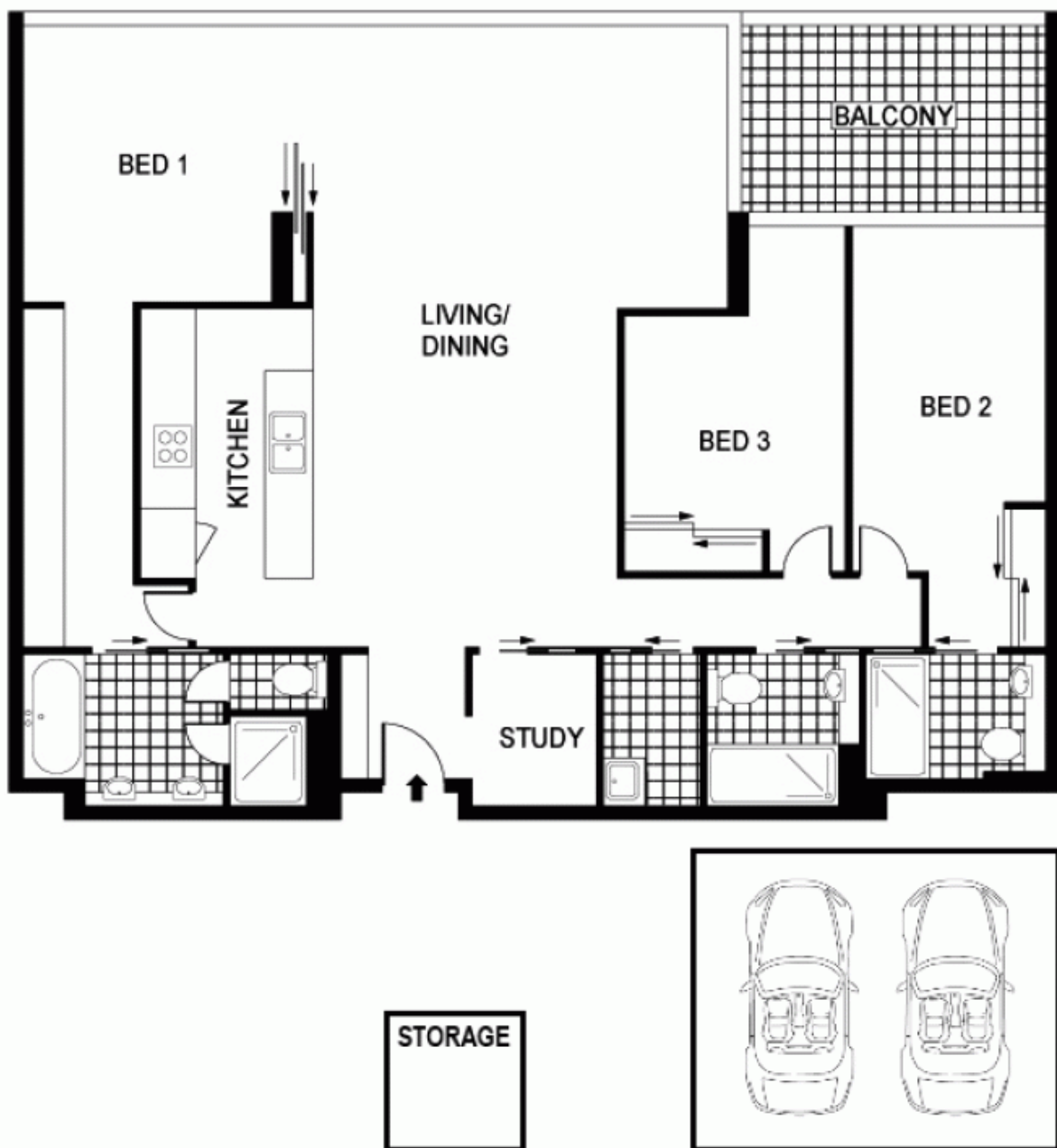
Agent

Morton RE

 [info@morton.com.au](tel:)
 info@morton.com.au

morton.com.au

2802/157 Liverpool Street, Sydney



The information above is provided in good faith and has been provided to us from a variety of sources. We have not verified whether the information is accurate and do not have any belief one way or other in its accuracy. We do not accept any responsibility to any person for its accuracy and do no more than pass it on. All interested parties should rely on their own inquiries in order to determine whether or not this information is in fact accurate.