



morton.

SYDNEY 703/50 Murray Street

 2  2  1

Set in the highly regarded One Darling Harbour building this property is perfectly positioned on Level 7 capturing prized Darling Harbour, Cockle Bay and City skyline views from all rooms.

At 101sqm the apartment takes in full advantage of its enviable location and clever internal layout. A large covered entertainers balcony with enthralling views is accessed from both living and bedrooms.

Comprising two good sized bedrooms with builtin robes, master with ensuite, modern kitchen, reverse cycle air conditioning, open plan living and main bathroom with bathtub and concealed laundry facilities plus one secure carspace.

One Darling Harbour provides five star amenities for its residents, including; indoor 25m lap pool, spa, outdoor sundeck, large sauna, fully equipped gymnasium and 24 hour concierge.

View

As advertised or by appointment

Agent

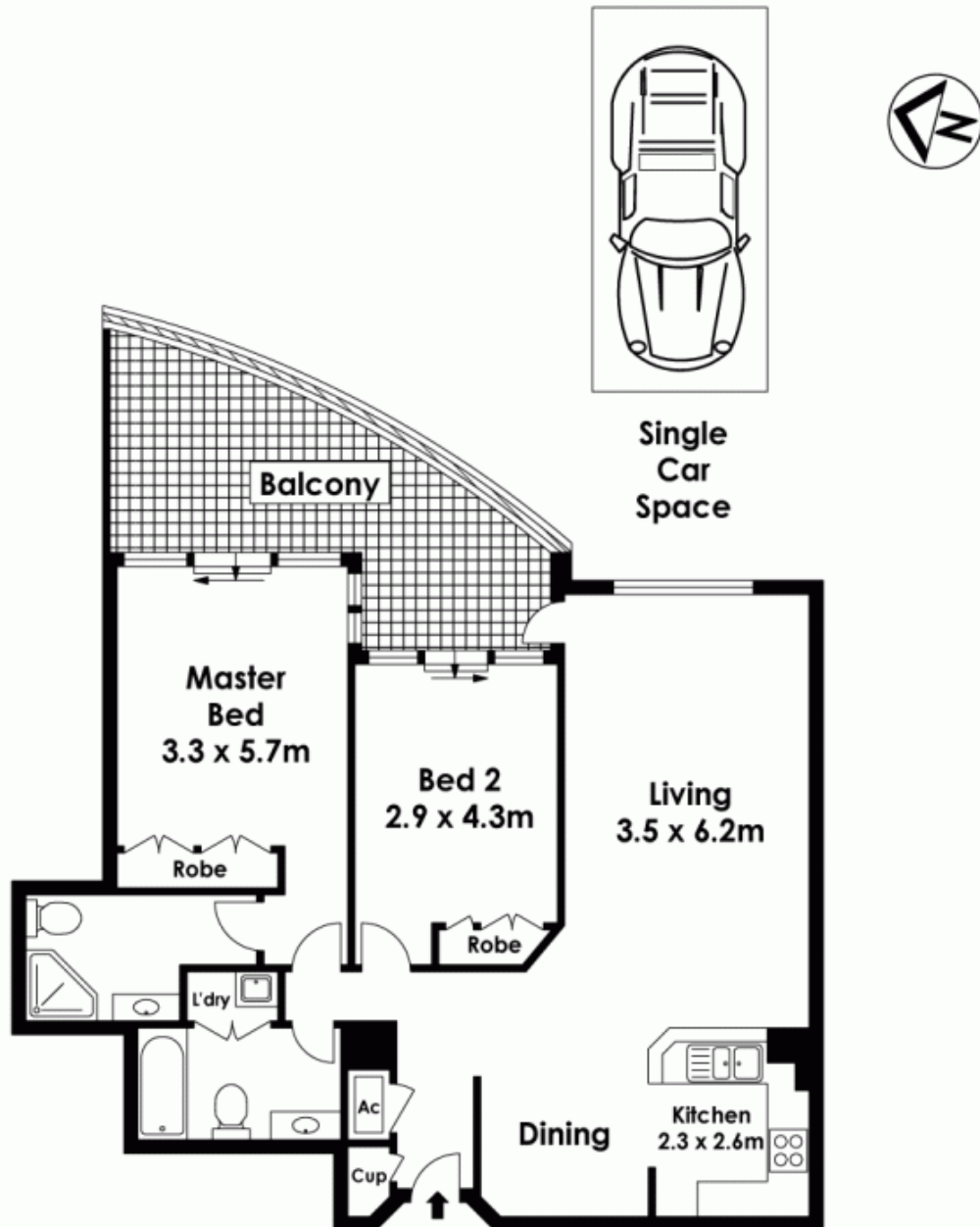
Morton RE



 info@morton.com.au

morton.com.au

703/50 Murray Street, Pyrmont



The information above is provided in good faith and has been provide to us from a variety of sources. We have not verified whe accurate and do not have any belief one way or other in its accuracy. We do not accept any responsibility to any person for it pass it on. All interested parties should rely on their own inquiries in order to determine whether or not this information is

Floor Plan by www.squaremeter.com.au