



**morton.**

**SYDNEY** 705/157 Liverpool Street

 2  2  1

Immaculately presented and situated in the prized north/east position of the luxurious 'The Hyde' is this 114sqm two bedroom plus study apartment showcases sophistication and style. Designed by multi award-winning architects WOHA, The Hyde has quickly become an exclusive address for the astute city resident.

Featuring an open plan living area with floor to ceiling windows optimising abundant natural light, enclosed balcony ideal for year round entertaining while taking full advantage of spectacular views over iconic Hyde Park and two spacious bedrooms with built-in robes, the main with deluxe ensuite.

Additional features include a cleverly designed study nook, gas kitchen with Miele appliances, air conditioning, internal laundry, and secure parking with storage unit.

The Hyde is a pet friendly residential building conveniently located within moments of the CBD, Surry Hills and East Sydney and within walking distance of galleries, museums,

[morton.com.au](http://morton.com.au)

**View**

As advertised or by appointment

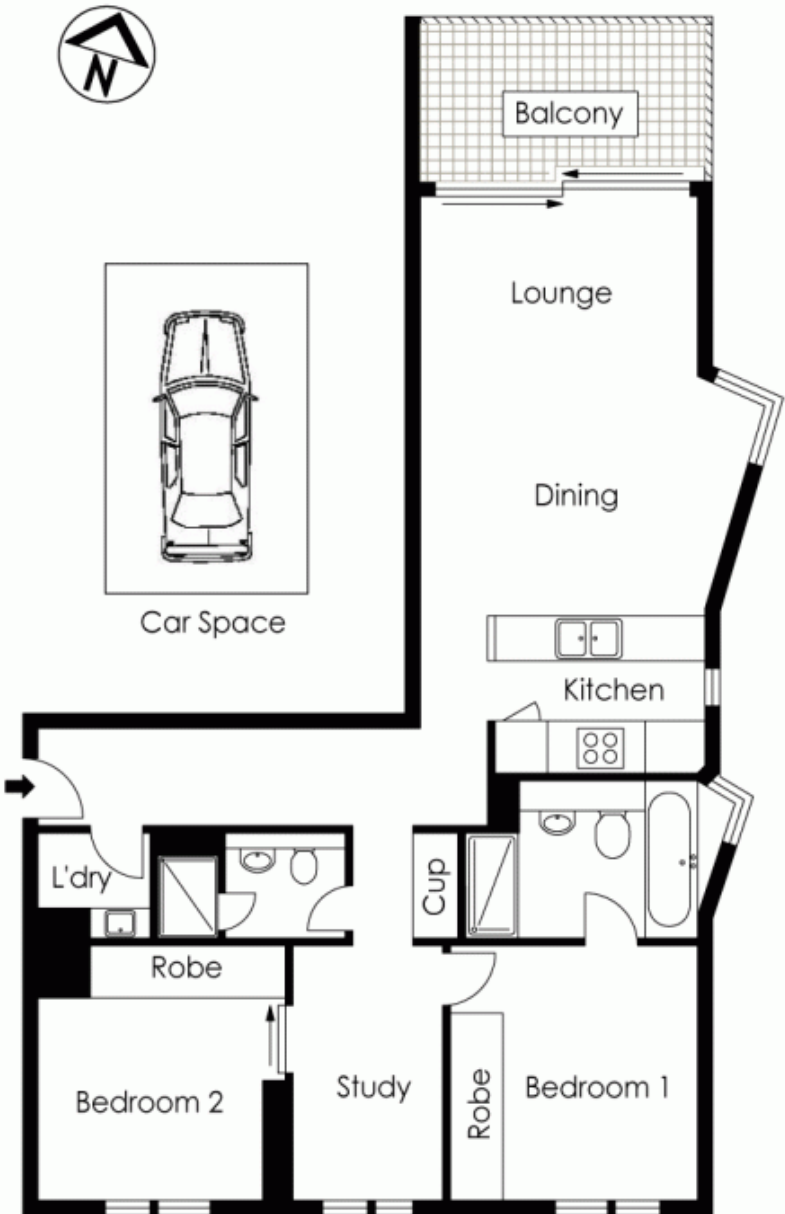
**Agent**

**Morton RE**

  [info@morton.com.au](mailto:info@morton.com.au)



# 705 - 157 Liverpool Street, Sydney



The information above is provided in good faith and has been provide to us from a variety of sources. We have not verified whe accurate and do not have any belief one way or other in its accuracy. We do not accept any responsibility to any person for it pass it on. All interested parties should rely on their own inquiries in order to determine whether or not this information is

Floor Plan by [www.squaremeter.com.au](http://www.squaremeter.com.au)