



morton.

SYDNEY 84/267-277 Castlereagh Street

 2  2  1

Ideally located in the heart of Sydney City and positioned on Level 26 of the sought after Museum Towers is this amazing 103sqm two bedroom apartment with parking.

The open plan living area flows to the enclosed balcony with stunning views North and East across The Heads, East Sydney and out to Botany Bay.

Both bedrooms accommodate built-in robes plus access to a shared balcony with extensive views over the city and towards the Blue Mountains. There are two bathrooms, with master includes a separate tub and shower plus there is an internal laundry with a new dryer.

The apartment has been recently updated with new flooring, stove and cook top and further improvements to capitalise on this fantastic property are possible.

Residents enjoy the ultimate lifestyle in this secure building with concierge, 24 hour security and building management

View

As advertised or by appointment

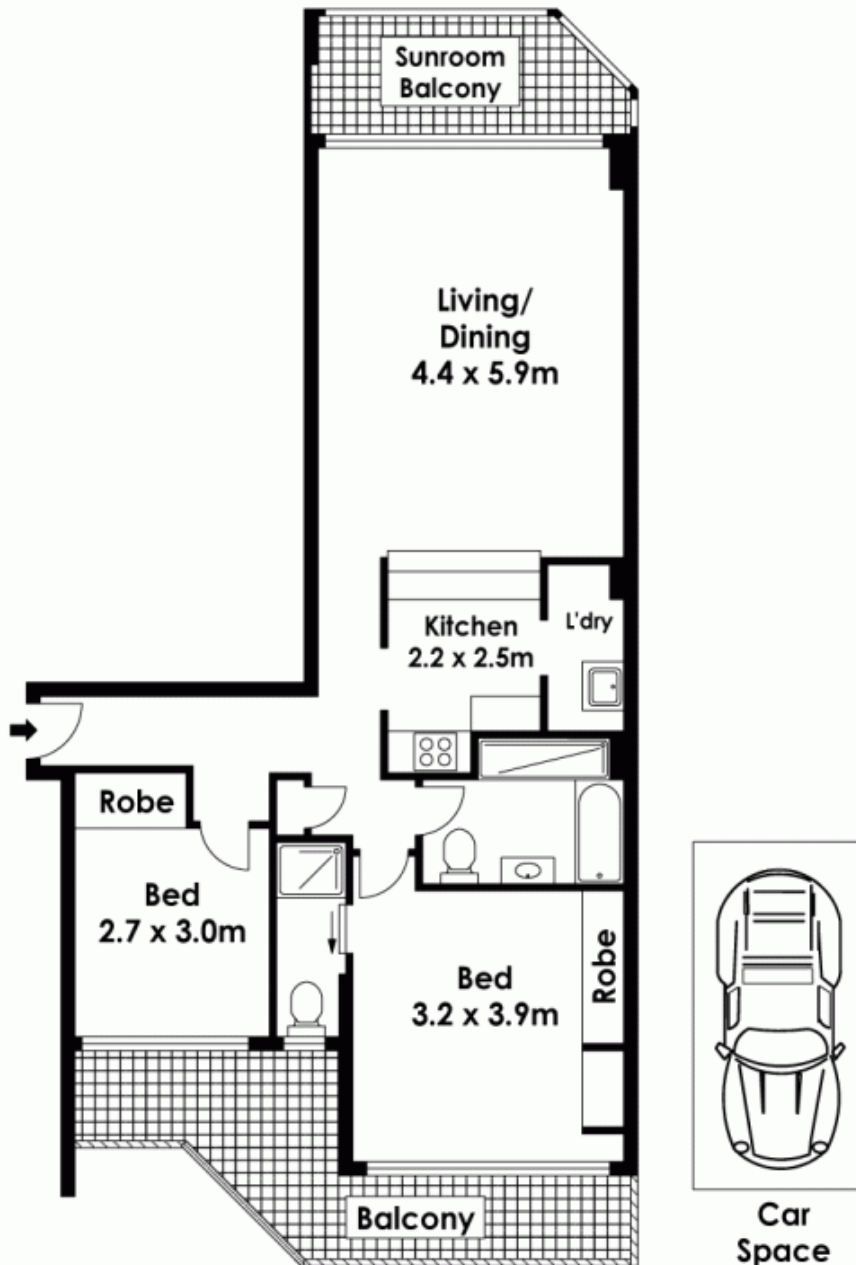
Agent

Morton RE

 [info@morton.com.au](tel:)

morton.com.au

84/267 Castlereagh Street, Sydney



The information above is provided in good faith and has been provide to us from a variety of sources. We have not verified whe accurate and do not have any belief one way or other in its accuracy. We do not accept any responsibility to any person for it pass it on. All interested parties should rely on their own inquiries in order to determine whether or not this information is