



**morton.**

**SYDNEY** 2801/157 Liverpool Street

 3  3  2

**JUST SOLD - 2801 THE HYDE - MORE PROPERTIES WANTED!**

Situated on Level 28 in The Hyde, this highly sought after 162qm floor plan features a sweeping northerly aspect from the living room and master bedroom over Hyde Park and the Harbour beyond. A dual access enclosed balcony with floor-to-ceiling windows makes this prized property ideal for all-year-round entertaining.

**View**

As advertised or by appointment

**Agent**

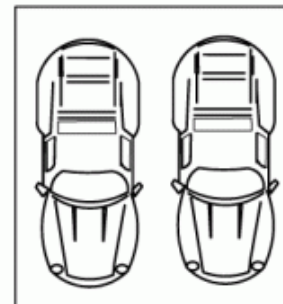
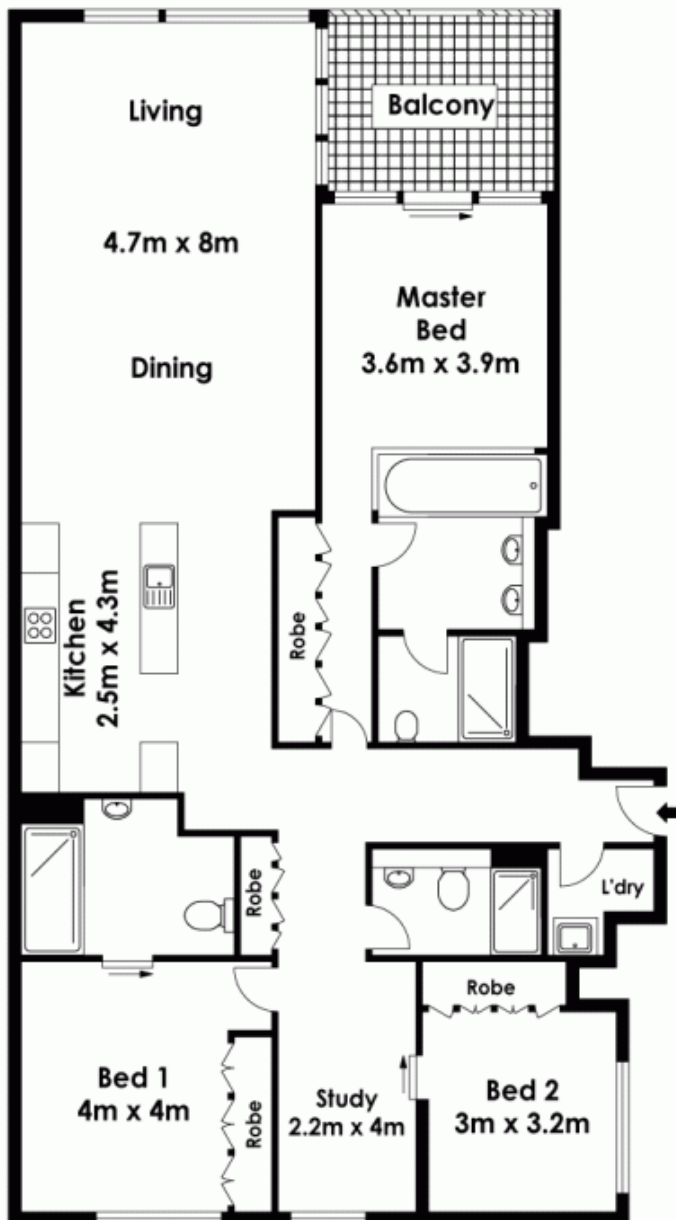
**Morton RE**



 info@morton.com.au

**morton.com.au**

# 2801/157 Liverpool Street, Sydney



Double car Spaces

The information above is provided in good faith and has been provide to us from a variety of sources. We have not verified whe accurate and do not have any belief one way or other in its accuracy. We do not accept any responsibility to any person for it pass it on. All interested parties should rely on their own inquiries in order to determine whether or not this information is