



morton.

SYDNEY 401/187 Liverpool Street

 2  2  1

Set on the cusp of the City, Surry Hills and East Sydney opposite Hyde Park is this sought after two bedroom apartment in The Connaught, a highly desirable iconic building that has everything you need to enjoy the inner city lifestyle.

Featuring a spacious living and dining area opening onto balcony, large kitchen with abundance of cupboard space, two generous sized bedrooms with built-in robes, dual access to a second balcony, master bedroom with marble ensuite plus additional main bathroom with internal laundry.

Residents of this highly sought after building enjoy access to a fantastic roof top pool, spa, sun deck, sauna, gymnasium, 24 hour concierge and building security.

Conveniently located with access to an abundance of shops, cafes, restaurants, transport, parks and a short stroll to the office, this property is sure to impress savvy investors or those seeking a city pied-a`-terre. Included with the property is one secure parking space and an enviable lifestyle.

View

As advertised or by appointment

Agent

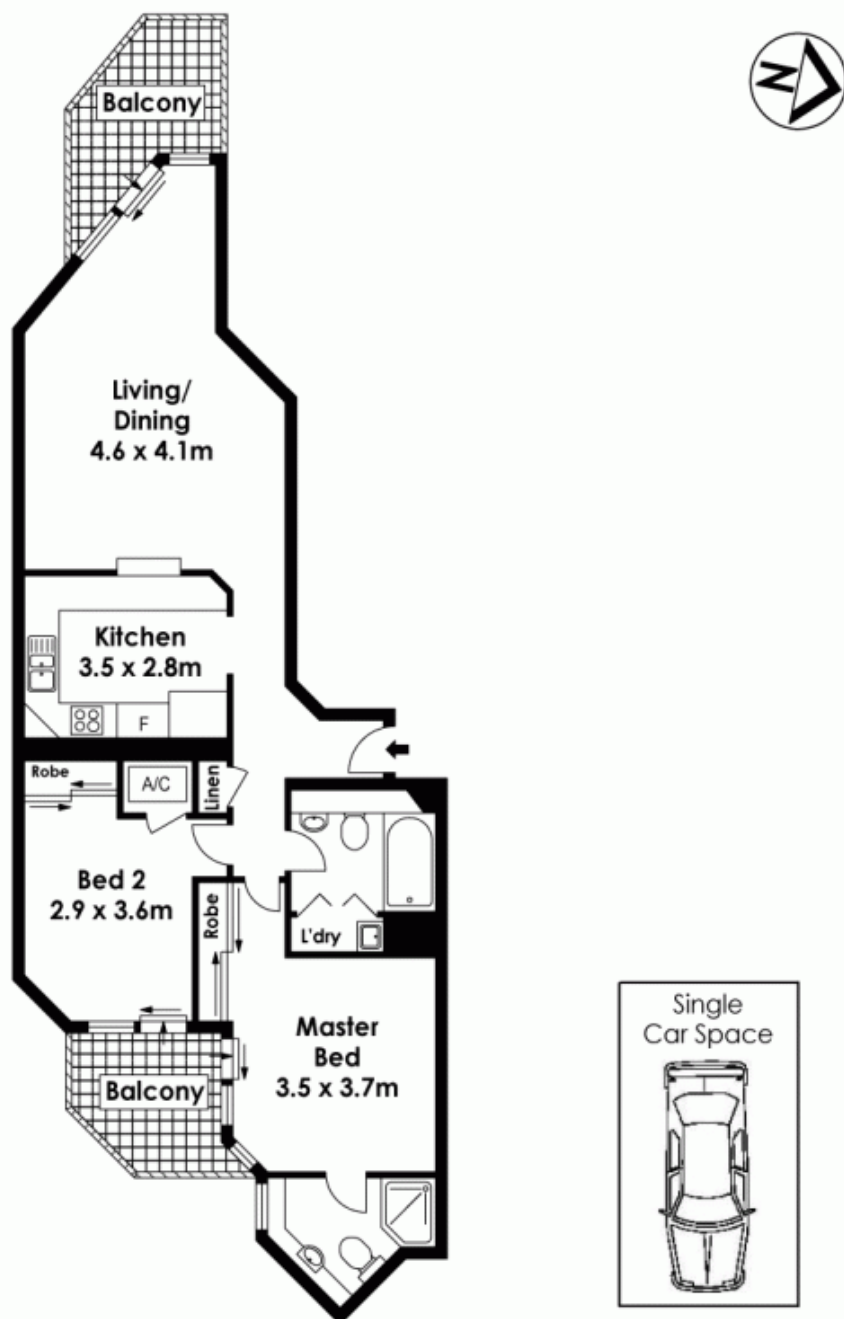
Morton RE

 [info@morton.com.au](tel:)
 info@morton.com.au

morton.com.au



401/187 Liverpool Street, Sydney



The information above is provided in good faith and has been provide to us from a variety of sources. We have not verified whe accurate and do not have any belief one way or other in its accuracy. We do not accept any responsibility to any person for it pass it on. All interested parties should rely on their own inquiries in order to determine whether or not this information is

Floor Plan by www.squaremeter.com.au