



morton.

SYDNEY 205/157 Liverpool Street

 2  2  1

Immaculately presented and beautifully upgraded with quality improvements this north/east facing 114sqm two bedroom plus study apartment is breathtaking in every respect.

Located in The Hyde, the residence provides 114sqm of fluid indoor/outdoor living with a prized park aspect overlooking Sydney's iconic Hyde Park.

The property benefits from feature windows allowing ample natural light and additional views and includes secure parking plus a secure lock-up storage cage.

Improvements include mirrored wall paneling to the entrance hallway, custom joinery to the hallway and study, upgraded wardrobe internals with LED lighting and suede leather lined drawers. Lighting throughout has been replaced with ERCO gallery lighting. Red plush pile carpeting, custom plantation shutters and sheer curtains are further luxury appointments. The Master Bedroom features beautiful Italian leather wall paneling.

View

As advertised or by appointment

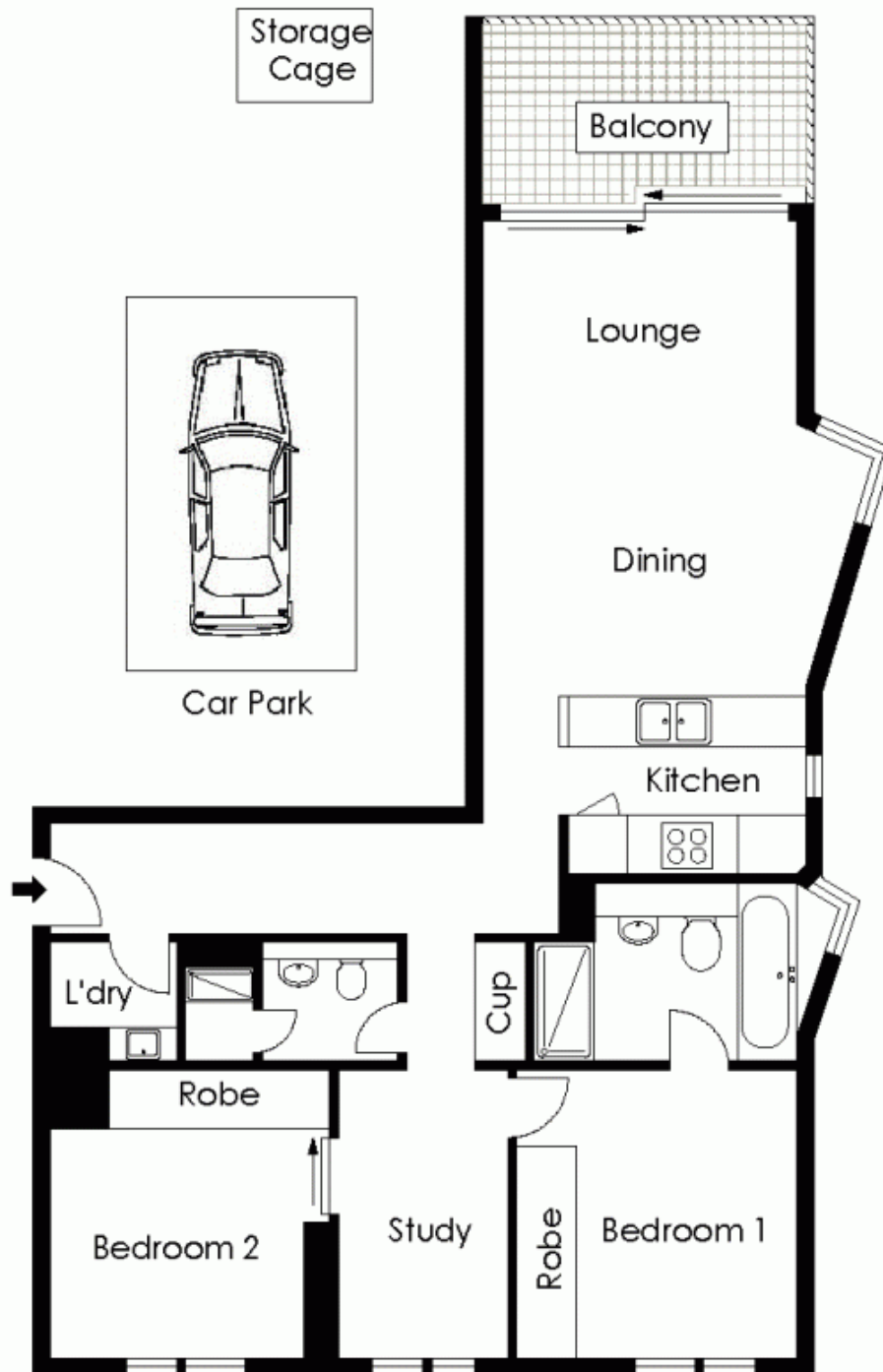
Agent

Morton RE

 [info@morton.com.au](tel:)

morton.com.au

205/157 Liverpool Street, Sydney



PLANS SHOW ONLY INDICATIVE OF LAYOUT. DIMENSIONS ARE APPROXIMATE.



The information above is provided in good faith and has been provide to us from a variety of sources. We have not verified who accurate and do not have any belief one way or other in its accuracy. We do not accept any responsibility to any person for it pass it on. All interested parties should rely on their own inquiries in order to determine whether or not this information is