



morton.

SYDNEY 1704/157 Liverpool Street

 3  2  2

It is with great pleasure I present this most highly prized three bed apartment within The Hyde. Designed by multi award-winning architects WOHA, The Hyde is fast becoming the most sought after address in Sydney CBD for the discerning city dweller. This apartment is situated on the 17th floor with one of the most highly prized 148sqm floor plans located on the north east corner. Residents will enjoy a splendid northerly aspect from the living room with floor-to-ceiling windows offering spectacular panoramic views over Hyde Park onto St Marys Cathedral and beyond to Sydney Harbour, furthermore accessed via the living room you can take in this superb view from your covered balcony with power point and gas point.

The special appeal of these apartments lies in exceptional design. The open plan kitchen with separate dining area can be closed off from the main living area. The master bedroom comes with a large built-in wardrobe and en-suite bathroom. There are two further bedrooms both with built-in wardrobes, plus bathroom, separate laundry and cloakroom. The apartment offers ducted air conditioning, TV and data / phone

View

As advertised or by appointment

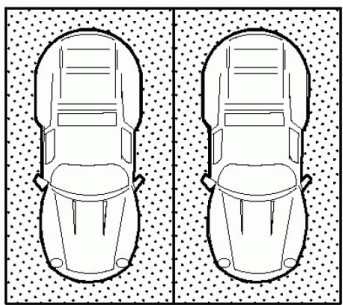
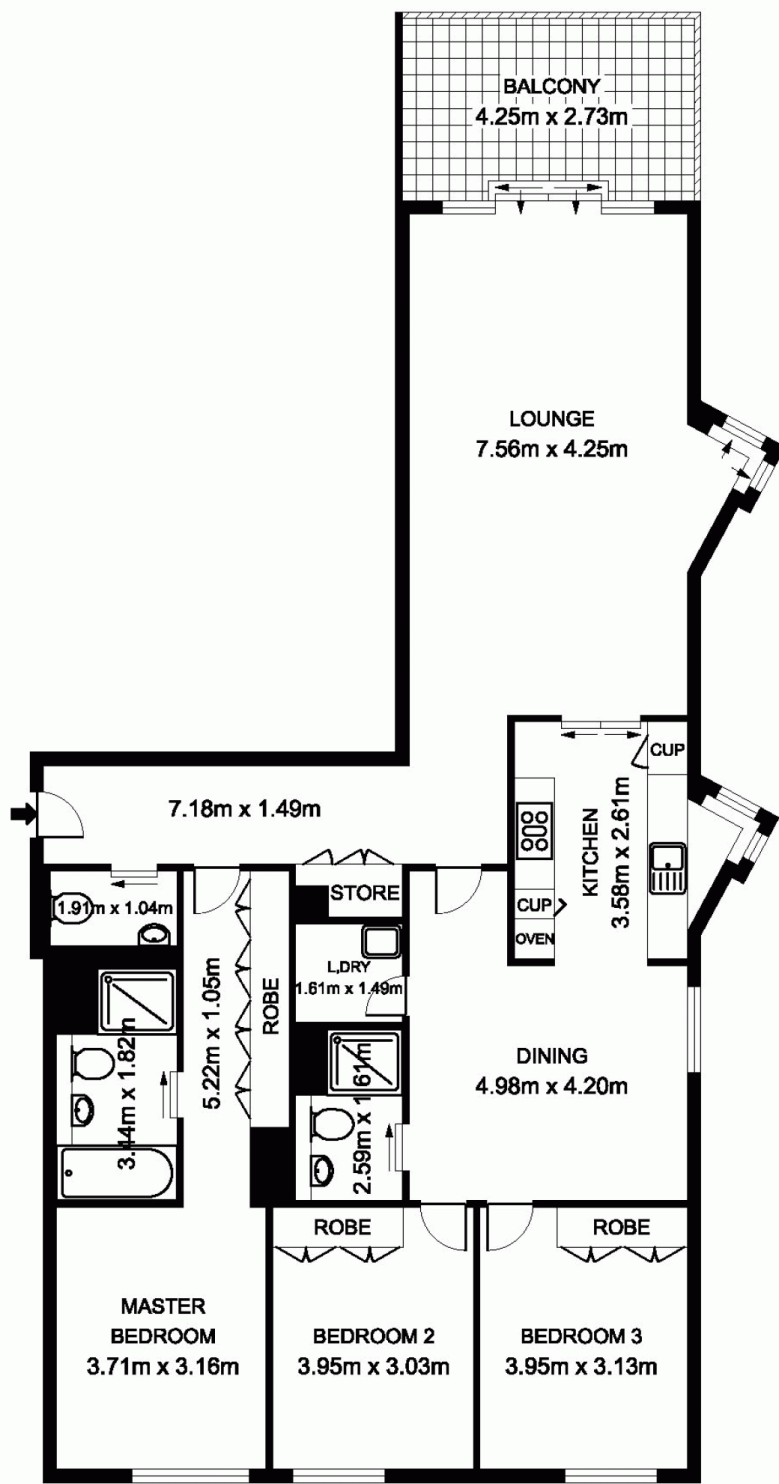
Agent

Morton RE

 info@morton.com.au

morton.com.au

1704/157 Liverpool Street, Sydney



DOUBLE CAR SPACE