



morton.

SYDNEY 402/38 Hickson Road

 2  2  1

Fantastic two bedroom in Northern CBD. - Perfect for investment or to live in, this spacious 110sqm split level two bedroom apartment features an abundance of extras including large study/storage area, basement storage cage and direct lift access from both levels.

Open plan living and dining area leads to a modern galley style kitchen with chic stainless steel appliances. Access to enclosable balconies from both bedrooms with adjustable privacy shutters for all year round enjoyment. Contemporary bathrooms on both levels, master with bath.

View

As advertised or by appointment

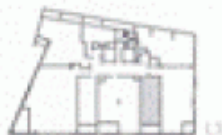
Agent

Morton RE

  info@morton.com.au

morton.com.au

402/38 Hickson Rd, Sydney



total area
 110.1m²
 internal area
 30m² - L3, 67.3m² - L4

external area
 6m² - L3, 6.8m² - L4
 basement storage area
 5.6m²

parking
 one

apartment 402

Important notice: The information and illustrations shown here are indicative only and subjected to change. The vendor, companies related to the vendor and their agents do not warrant the accuracy of the information and do not accept any liability for any error or discrepancy in that information. The displayed information and illustrations will not form part of any contract of sale. Interested parties must rely on their own enquiries and information in the contract for sale.