



morton.

PYRMONT PYRMONT

 2  2  1

Enjoying north facing, water views of Darling Harbour and Anzac Bridge views to the west, this impressive apartment is the perfect lifestyle choice or astute investment.

Open plan living, dining and kitchen areas lead out to a sunny entertainer's terrace overlooking the harbour and Pyrmont's district.

The apartment features two spacious double bedrooms both with built-in wardrobes and access to the terrace and two marble bathrooms, master with en-suite and main with bath and shower.

Further qualities include reverse cycle ducted A/C, granite bench tops, Gaggenau appliances and an internal laundry.

Set in One Darling Harbour, with resort style facilities on-site including pool, spa, sauna and 5 star gym, sunbathing areas and 24 hour concierge/onsite building manager.

View

As advertised or by appointment

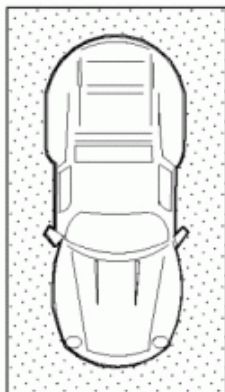
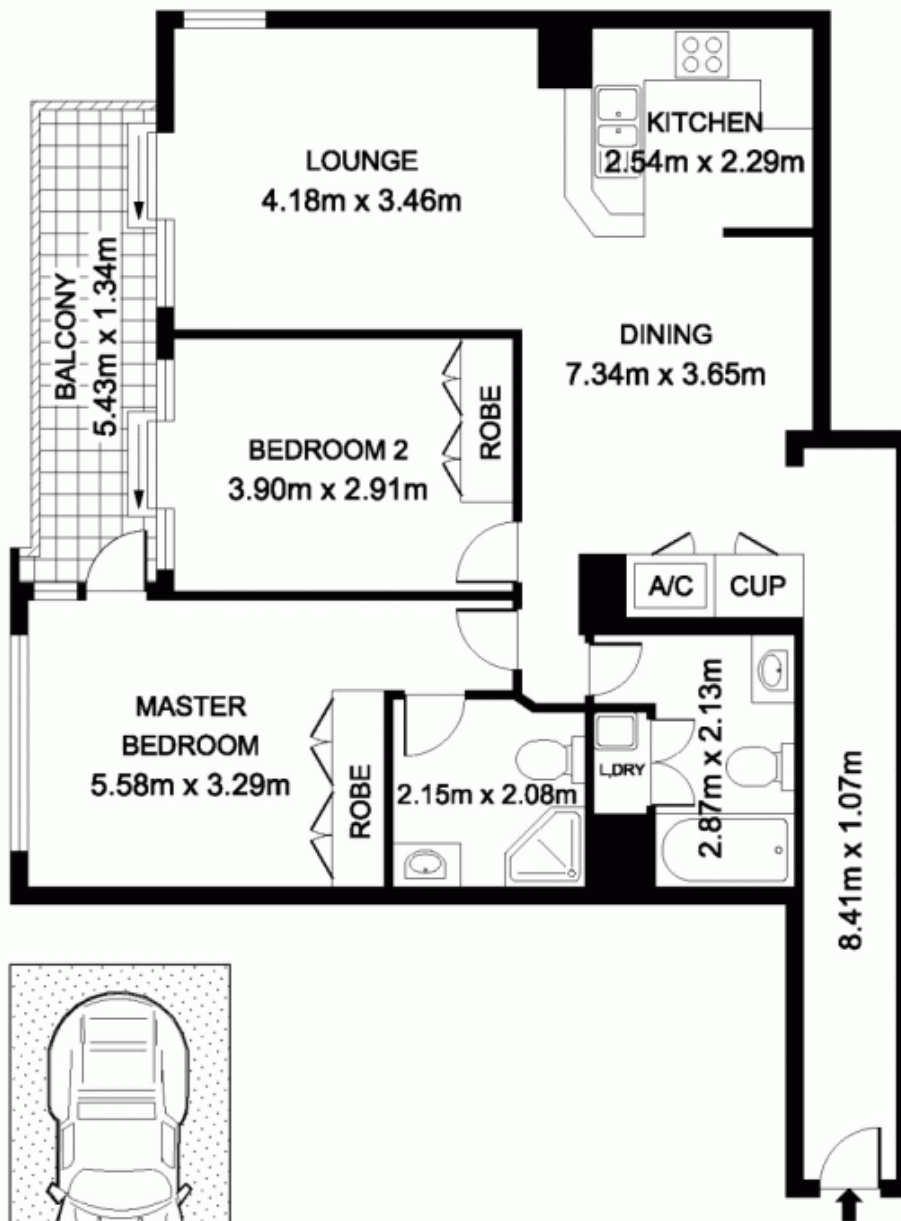
Agent

Morton RE

 [02 9550 0000](tel:0295500000)
 info@morton.com.au

morton.com.au

611/50 Murray Street, Pyrmont



SINGLE CAR SPACE