



morton.

SYDNEY 1901/281 Elizabeth Street

 2  2  1

Exclusive 100sqm 2 bed apartment with breathtaking views over Hyde Park, Sydney Harbour & out towards The Heads. The apartment is located in one of the most dynamically changing residential suburbs in Sydney Hyde Park!

Located on the north east corner and positioned on Level 19 near the top of this highly sought after Hyde Park Residence, this apartment will make the perfect home or city pied-a-terre. There is 74sqm internal space and 26sqm external, with an additional 15sqm car space.

The apartment comprises living room with dining area, an open plan kitchen with gas cook top, floor-to-ceiling-windows/sliding doors showcasing the splendid views with access on to a generous wrap around balcony. Wake up in your master bedroom looking out over Hyde Park, with private balcony, built ins and ensuite. The second bedroom also features built-ins, there is a second family bathroom, separate laundry and storage cupboards.

View

As advertised or by appointment

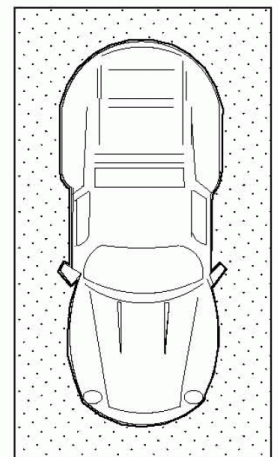
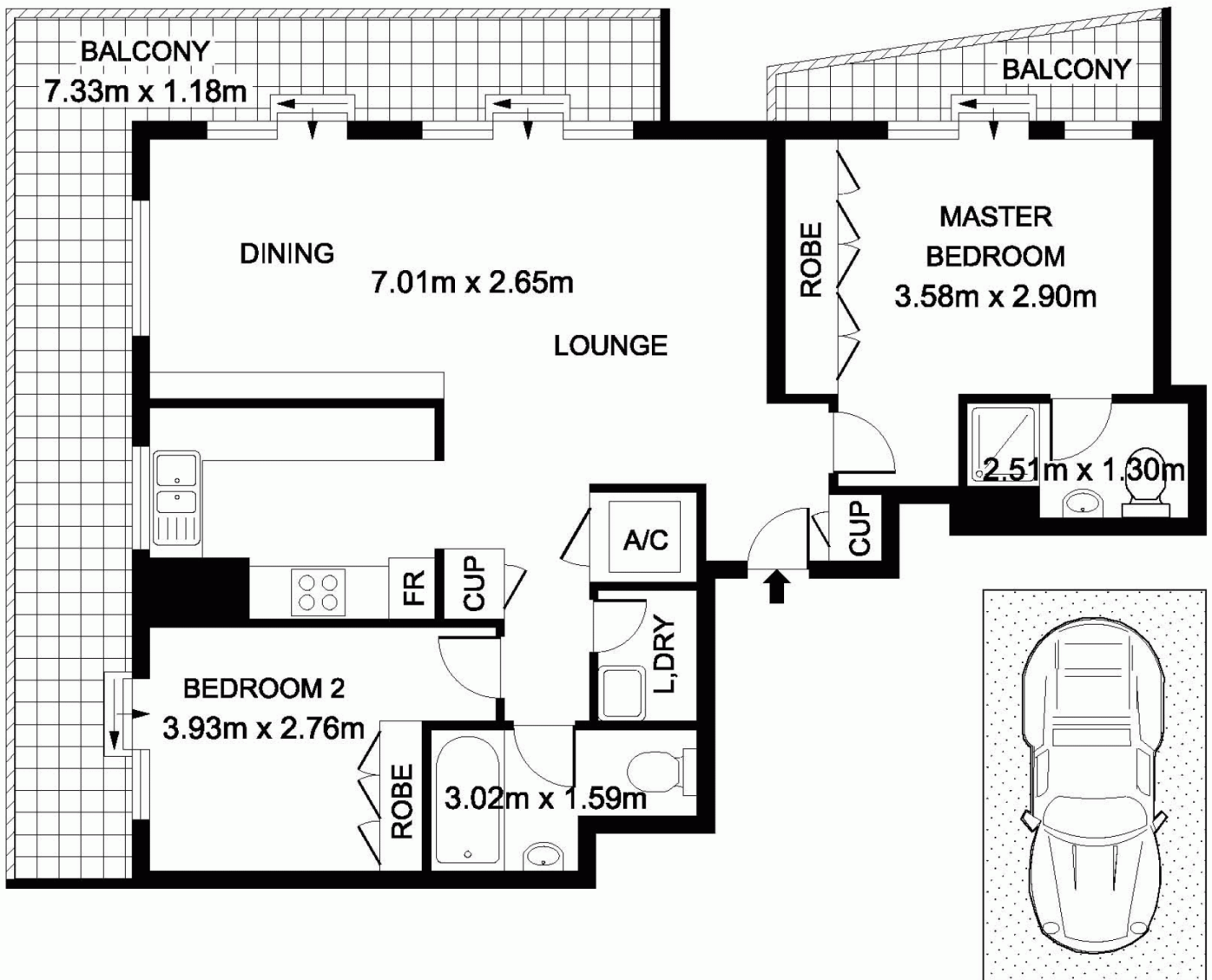
Agent

Morton RE

 [info@morton.com.au](tel:)
 info@morton.com.au

morton.com.au

1901/281 Elizabeth Street, Sydney



SINGLE CAR SPACE

The information above is provided in good faith and has been provided to us from a variety of sources. We have not verified whether the information is accurate and do not have any belief one way or other in its accuracy. We do not accept any responsibility to any person for its accuracy and do no more than pass it on. All interested parties should rely on their own inquiries in order to determine whether or not this information is in fact accurate.