



morton.

SYDNEY 103/38 Hickson Road

 2  2  1

Set in a boutique building called The Bond, this spacious 105sqm 2 bedroom plus study apartment boasts exceptional value for a Northern CBD apartment. Ideally located moments from Walsh Bay, The Rocks & Wynyard Station with direct access to Kent Street from the rear of the building.

Two large double bedrooms with built-ins. Modern galley style kitchen, open plan living. Enclosable entertainers terrace with double height ceilings. Adjustable privacy shutters throughout. Bathrooms on both levels, master with bath.

Direct lift access to the apartment from both levels. Secure parking and separate 5sqm lock up storage cage. Well kept building with onsite building manager/concierge as well as pool and gym. Internal storage area that can easily be transformed to a study. Steps from the sought after upcoming Barangaroo Project.

Previously Leased \$750pw.
Strata \$1242.65 pq approx

morton.com.au

View

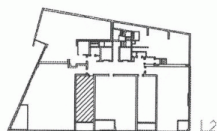
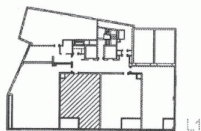
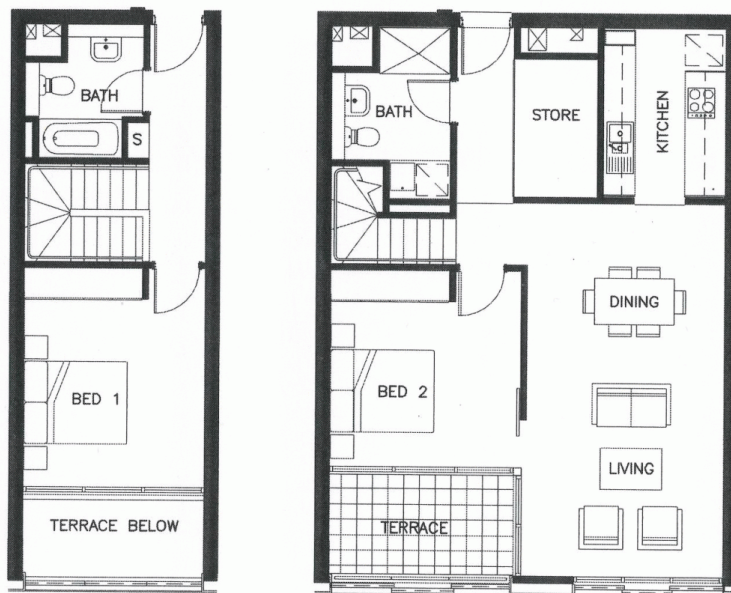
As advertised or by appointment

Agent

Morton RE



 info@morton.com.au



total area
105.5m²
internal area
71m² - L1, 27m² - L2

external area
7.5m²
basement storage area
5.5m²

parking
one

apartment 103

Important notice: The information and illustrations shown here are indicative only and subjected to change. The vendors, companies related to the vendors and their agents do not warrant the accuracy of the information and do not accept any liability for any error or discrepancy in that information. The displayed information and illustrations will not form part of any contract of sale. Interested parties must rely on their own enquiries and information in the contract for sale.