



# morton.

**Sydney** 2702/157 Liverpool Street

 3
  3
  2

With great pleasure we present this most sought after 3 bed apartment within The Hyde. Due for completion by August/September this year (2010), and designed by multi award-winning architects WOHA, The Hyde will become an exclusive address for the discerning city dweller.

Situated on the 27th floor with a highly prized 170sqm floor plan, residents will enjoy the northerly aspect from the living room & bedrooms giving access to the balcony with floor-to-ceiling windows offering spectacular panoramic views over Hyde Park onto St Marys Cathedral & beyond to Sydney Harbour.

There is an open plan kitchen with a large island bench. The master bedroom comes with a large built-in-robe & an opulent ensuite. There is a 2nd bedroom with its own ensuite & built-in-robe, and a 3rd bedroom with built-in-robe. Additional features include a cleverly designed study nook, separate bathroom & internal laundry. The apartment offers ducted air conditioning, TV & data/phone points in living rooms & master bedroom, two secure parking spaces & intercom access.

Residents have the convenience of an executive concierge service. There is access to a 25m infinity lap pool on Level 8, a communal gymnasium, sauna, barbeque, cabana & outdoor terrace area with superb views over Hyde Park towards The ANZAC Memorial & beyond to St Marys Cathedral.

With 131 apartments of varying floor plans over 34 levels The Hyde is Pet Friendly & conveniently located close to major transport links, and is at the centre of everything that Sydney has to offer.

You can easily stroll to Sydney's galleries, museums, theatres,

[morton.com.au](http://morton.com.au)

#### View

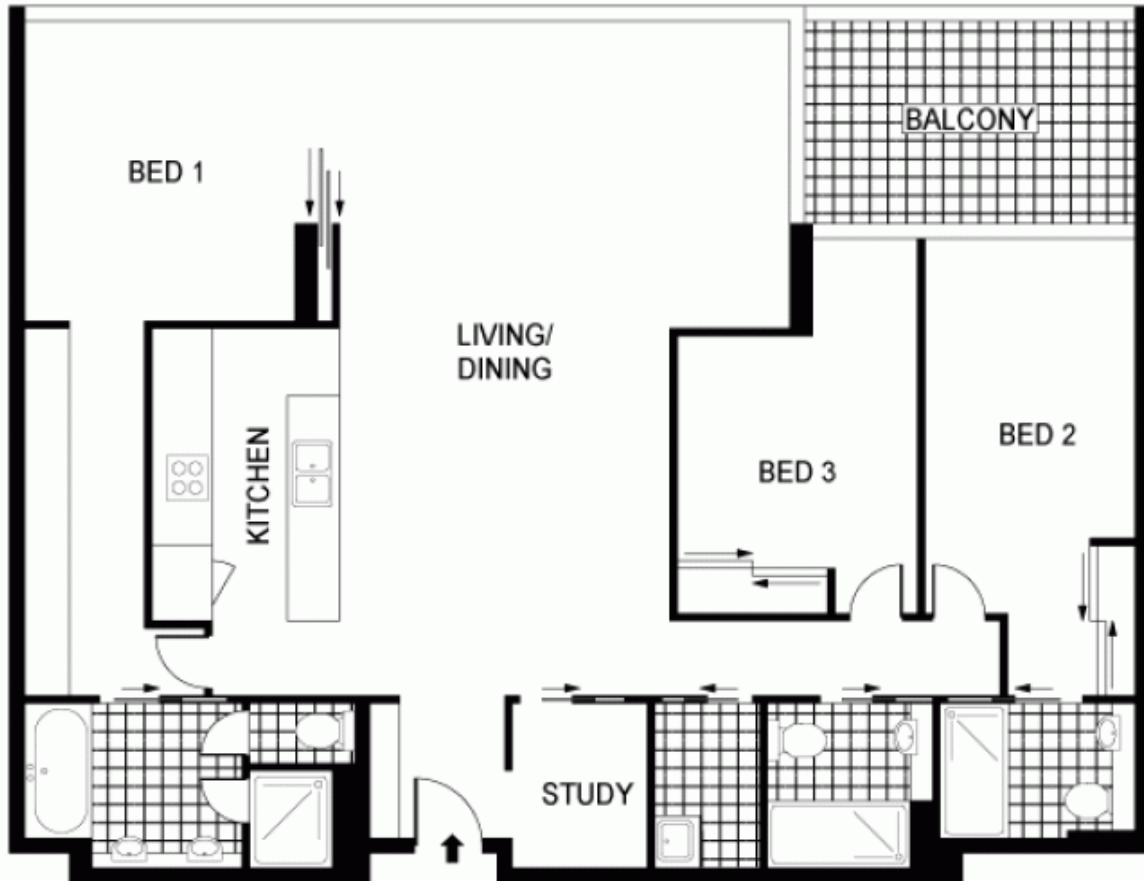
As advertised or by appointment

#### Agent

**Morton RE**



 [info@morton.com.au](mailto:info@morton.com.au)



0 1 2 3 4 5 SCALE (METRES)

PLANS SHOWN ONLY INDICATIVE OF LAYOUT. DIMENSIONS ARE APPROXIMATE.  
Floor plans by [capita.propertymedia.com](http://capita.propertymedia.com)

2702/157 LIVERPOOL STREET

SYDNEY