



morton.

PYRMONT 302/50 Murray Street

 2  2  1

Situated in the renowned One Darling Harbour building is this sensational 124sqm 2 bedroom apartment facing east with stunning views over Sydney Harbour & our famous City skyline. The apartment has been recently upgraded & presents immaculately.

Features include spacious living & dining areas opening onto a large entertaining balcony, two well proportioned bedrooms, master with ensuite & walk in robe, and access to balcony. Both bathrooms have separate shower & bathtubs, there is an internal laundry & secure parking with direct lift access.

The building is well positioned with convenient access to Sydney City & Pyrmont. Transport options include light rail, monorail, buses or a short walk to the QVB & the area is surrounded by wonderful cafes, restaurants, bars & attractions.

Relax & enjoy the generous roof top pool, spa, gymnasium & sundeck with sweeping harbour views. This is one of the most

View

As advertised or by appointment

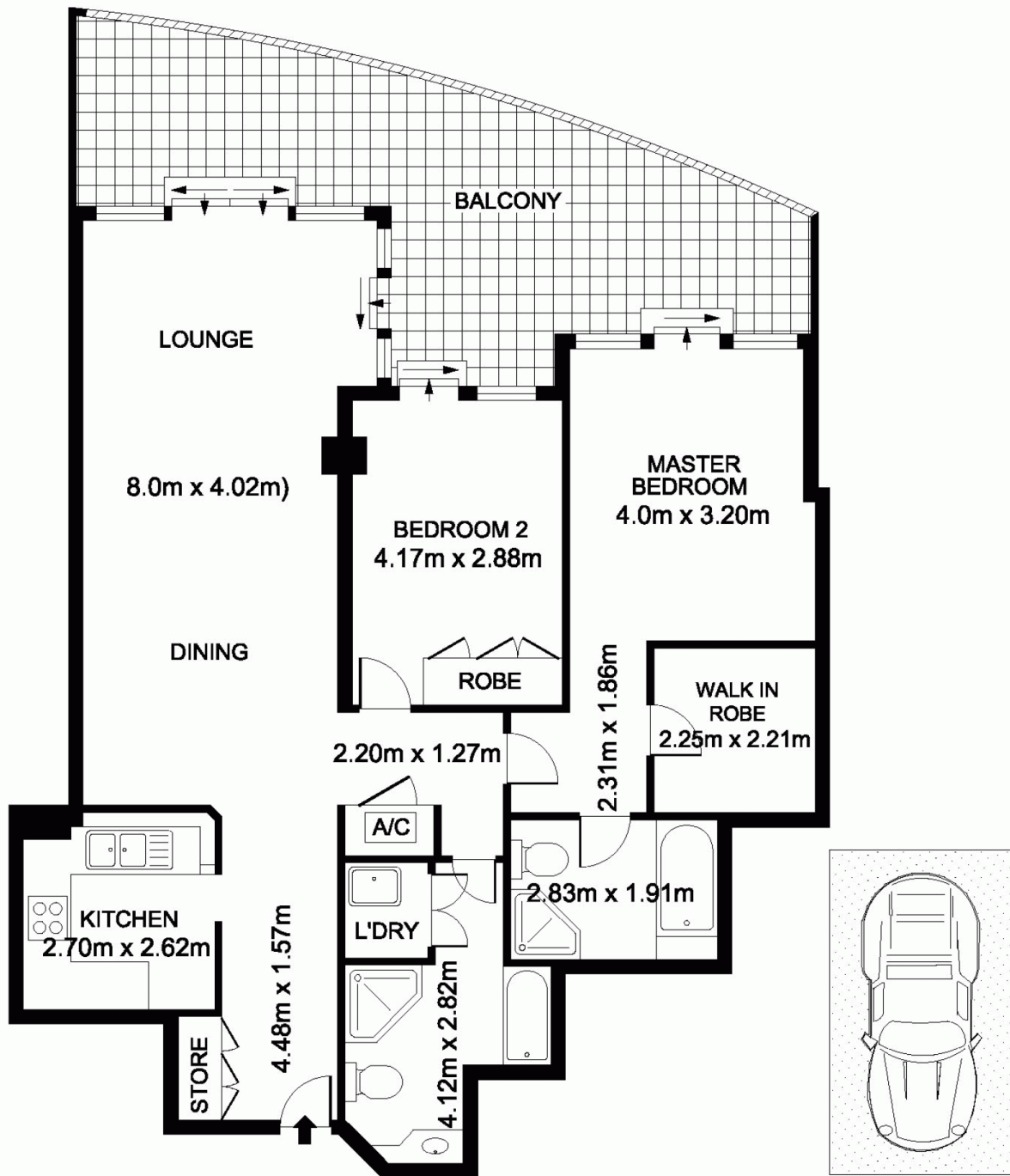
Agent

Morton RE

 [info@morton.com.au](tel:)

morton.com.au

302/50 Murray Street, Sydney



SINGLE SECURE CAR SPACE