



morton.

SYDNEY 1803/38 Bridge Street

 2  2  2

Perfectly positioned, this fabulous residence holds a central location in the heart of the CBD with stunning northern views directly over Sydney's majestic harbour and iconic bridge. Executives and city locals will know this is the ultimate inner city abode, offering a spacious split level layout with 3 outdoor areas, surrounded by world class attractions and local conveniences.

View

As advertised or by appointment

Agent

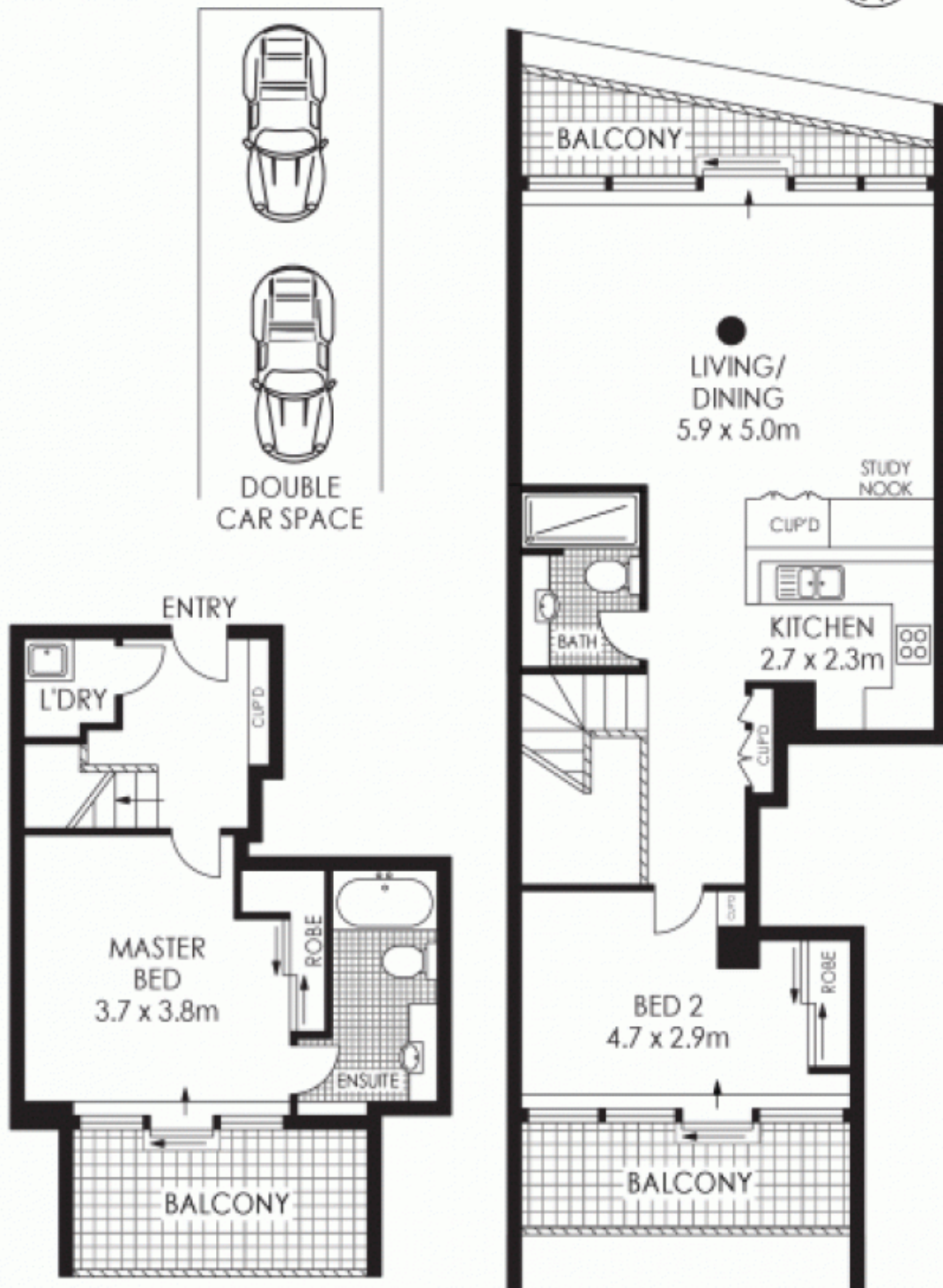
Sarah Fowell

  sarah@morton.com.au

- 120sqm of stylish interiors, freshly painted
- Open plan living areas with harbour views and balcony
- Modern kitchen with quality Smeg appliances
- Lower level dedicated to master bedroom with ensuite
- Both bedrooms with built-in robes and private balconies
- Well appointed main bathroom, internal laundry
- Ducted air conditioning, intercom and lift access
- Generous internal storage options
- Tandem car space and concierge service

morton.com.au

MORTON & MORTON



1803/38 Bridge Street, Sydney

The information above is provided in good faith and has been provide to us from a variety of sources. We have not verified whether the information is accurate and do not have any belief one way or other in its accuracy. We do not accept any responsibility to any person for its accuracy and do no more than pass it on. All interested parties should rely on their own inquiries in order to determine whether or not this information is in fact accurate.