



morton.

SYDNEY 3202/197 Castlereagh Street

 3  2  2

A unique opportunity beckons to secure a rare 3 bedroom apartment in the desirable Victoria Tower in the heart of the CBD. With a prime N/E facing position, this 104sqm apartment boasts an enviable outlook from the 32nd floor. Dazzling unobstructed views unveil the graceful grounds of Hyde Park, Sydney Harbour and beyond to the Pacific Ocean.

- Light and bright living/dining area opening onto 2 balconies
- Well designed kitchen with breakfast bar and granite benches
- Master suite with walk-in robe, en-suite and private Juliet balcony
- 2 additional double bedrooms, both with park and water views
- Separate internal laundry room with dryer and washer
- Extremely large 23sqm car space (suitable for 2 cars in tandem)
- Carpeted and air conditioning throughout

View

As advertised or by appointment

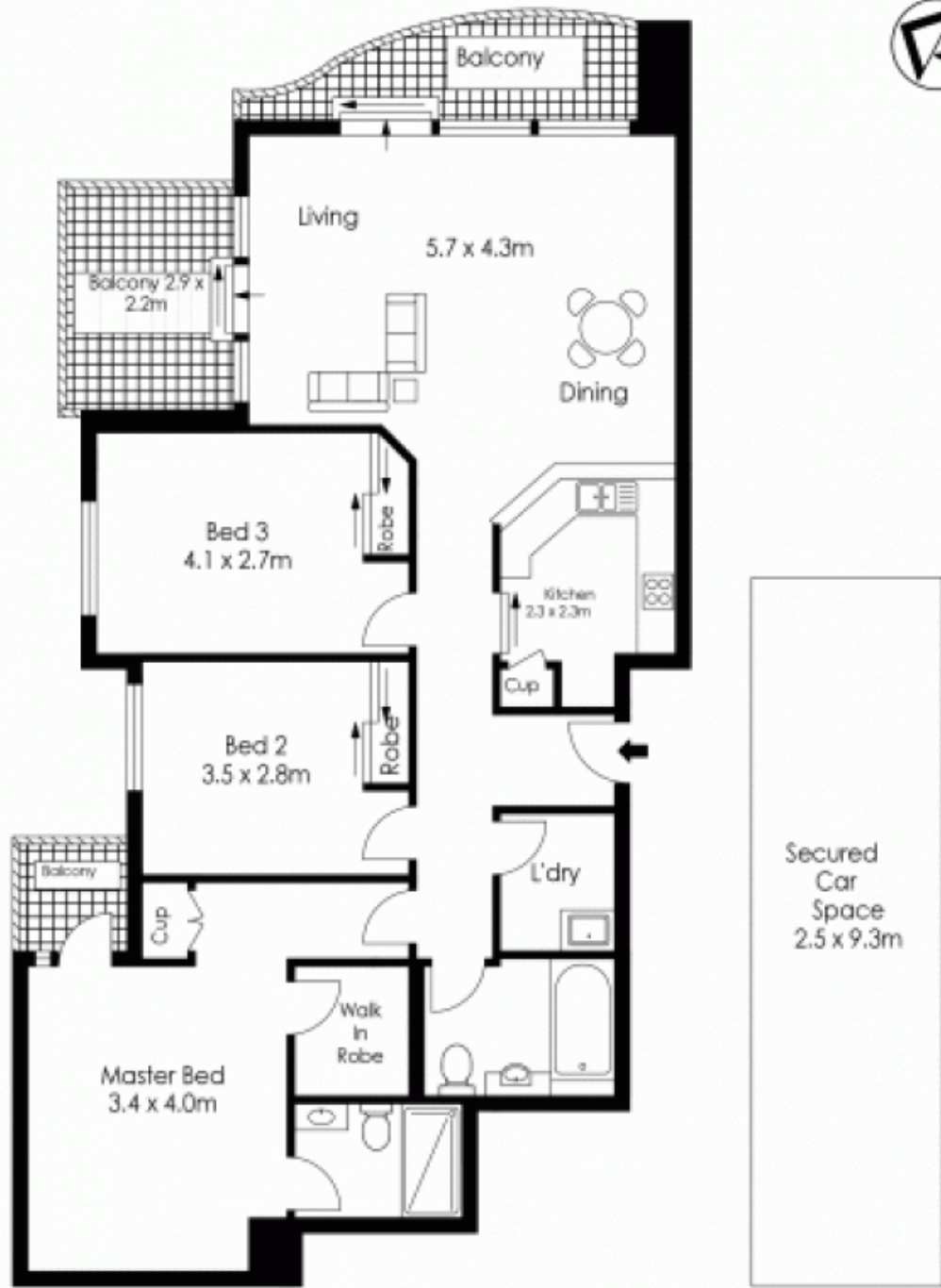
Agent

Ettiene West

 0410 593 749

 ettiene@morton.com.au

morton.com.au



The information above is provided in good faith and has been provide to us from a variety of sources. We have not verified whether the information is accurate and do not have any belief one way or other in its accuracy. We do not accept any responsibility to any person for its accuracy and do no more than pass it on. All interested parties should rely on their own inquiries in order to determine whether or not this information is in fact accurate.