



morton.

PYRMONT 111/50 Murray Street

🛏 2 🚿 2 🚗 1

Positioned in a superb location at the prestigious 'One Darling Harbour' building, this two bedroom apartment offers harbour side living in a top-shelf location.

Adjacent to Pyrmont Bridge walkway and light rail, access to the CBD is easy, whilst world-class restaurants, nightlife and all the attractions of iconic Darling Harbour are just footsteps away.

The apartment enjoys seamless indoor and outdoor entertaining options with a large N/E facing, all-weather terrace. Offering multiple seating areas residents can enjoy Alfresco dining with the backdrop of the city lights. Modern interiors are appointed with marble floors throughout and a generous master bedroom with walk-in robe and designer en-suite.

The lifestyle includes use of the building's roof top terrace, showcasing Sydney's wonderful city skyline and harbour waterways. Five star resort facilities include a 25m indoor heated lap pool, spa, sauna and fully equipped gymnasium.

View

As advertised or by appointment

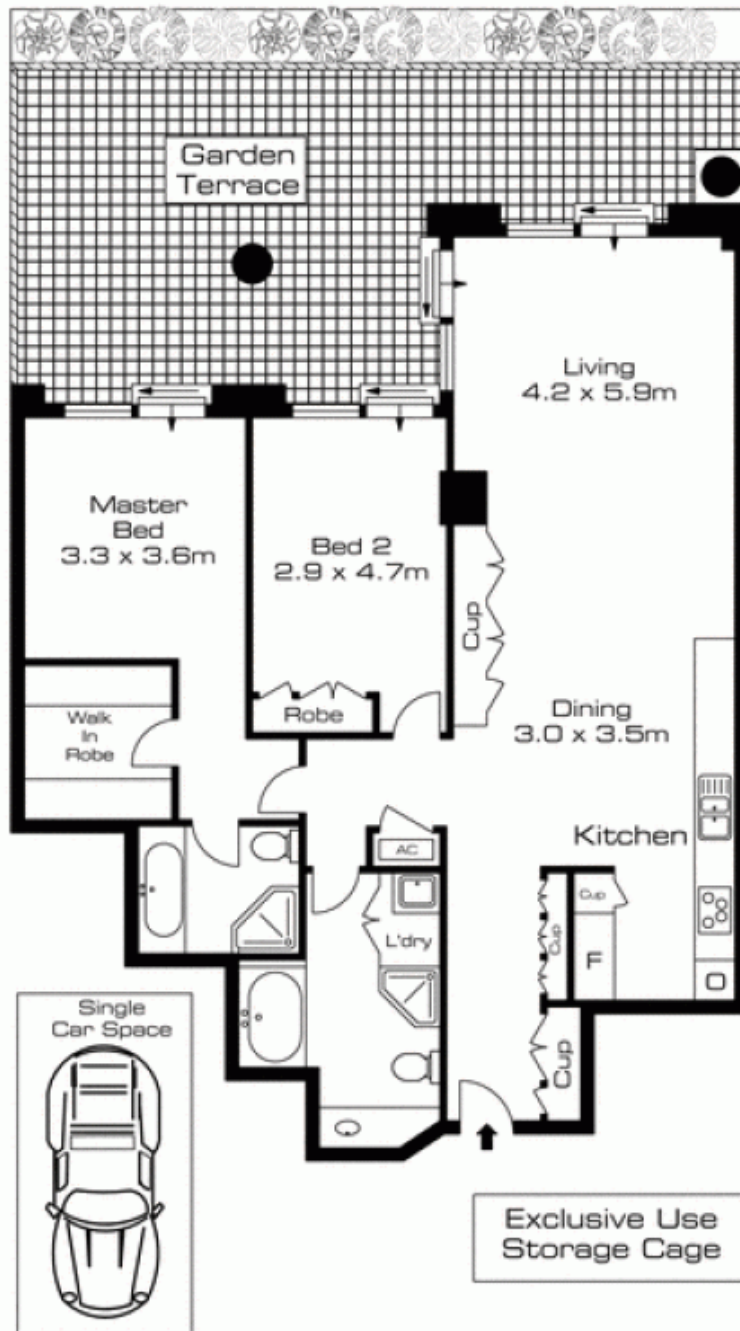
Agent

Sarah Fowell

📞
✉ sarah@morton.com.au

morton.com.au

1 1 1/50 Murray Street, Pyrmont



The information above is provided in good faith and has been provide to us from a variety of sources. We have not verified whether the information is accurate and do not have any belief one way or other in its accuracy. We do not accept any responsibility to any person for its accuracy and do no more than pass it on. All interested parties should rely on their own inquiries in order to determine whether or not this information is in fact accurate.