



morton.

CHIPPENDALE 15/39 Dangar Place

2 1 2

View

As advertised or by appointment

Agent

Ettiene West

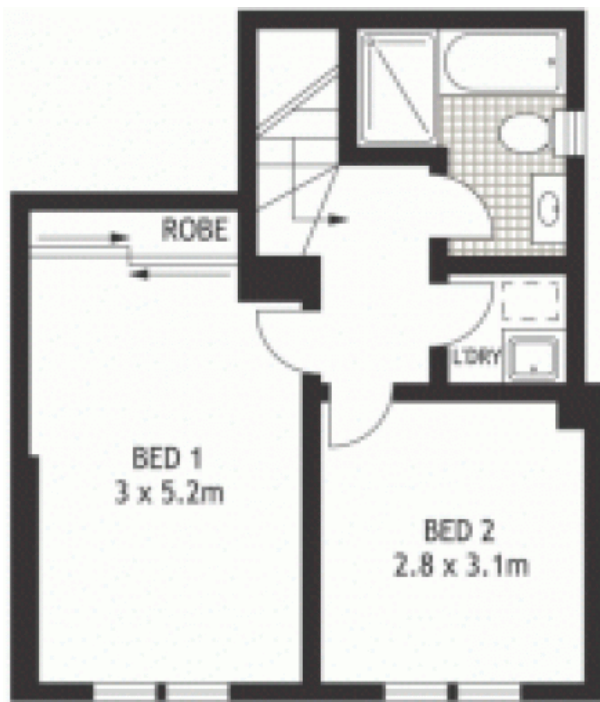
0410 593 749

ettiene@morton.com.au

Occupying a premier position on the top floor one of Chippendale's most recognised buildings, this welcoming residence flows over two bright levels. Neatly presented with further room for modernisation to fully maximise for ultra contemporary living, it is just a short walk to community life.

- Corner position filled with the light of a NE aspect
- Queen sized bedrooms, master with built-in robe
- Open plan combined lounge and dining area
- Generous entertaining balcony, user-friendly kitchen
- Secure underground parking for two, polished floors, internal laundry

morton.com.au



FOURTH FLOOR



THIRD FLOOR

