



**morton.**

**SURRY HILLS** 36/450 Elizabeth Street

 1  1  1

In an ultra convenient setting on the edge of the renowned and rapidly gentrifying garment district, this superb residence is a quality offering. Ideally suited to the investor, downsizer or first time owner seeking a highly prized position in the vibrant inner city, it is just a walk to Haymarket, Central and the CBD.

- Exceptionally well proportioned over 80 square metres
- Filled with the streaming light of a northern perspective
- Open plan lounge/dining flows to a massive balcony
- An elevated setting captures uninterrupted skyline views
- Newly carpeted and painted, well presented interiors
- Undercover parking space, security intercom and pool
- Separate study/home office, visitor parking, air conditioning

**View**

As advertised or by appointment

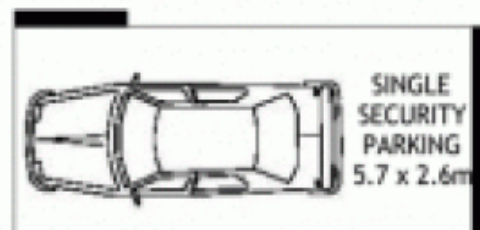
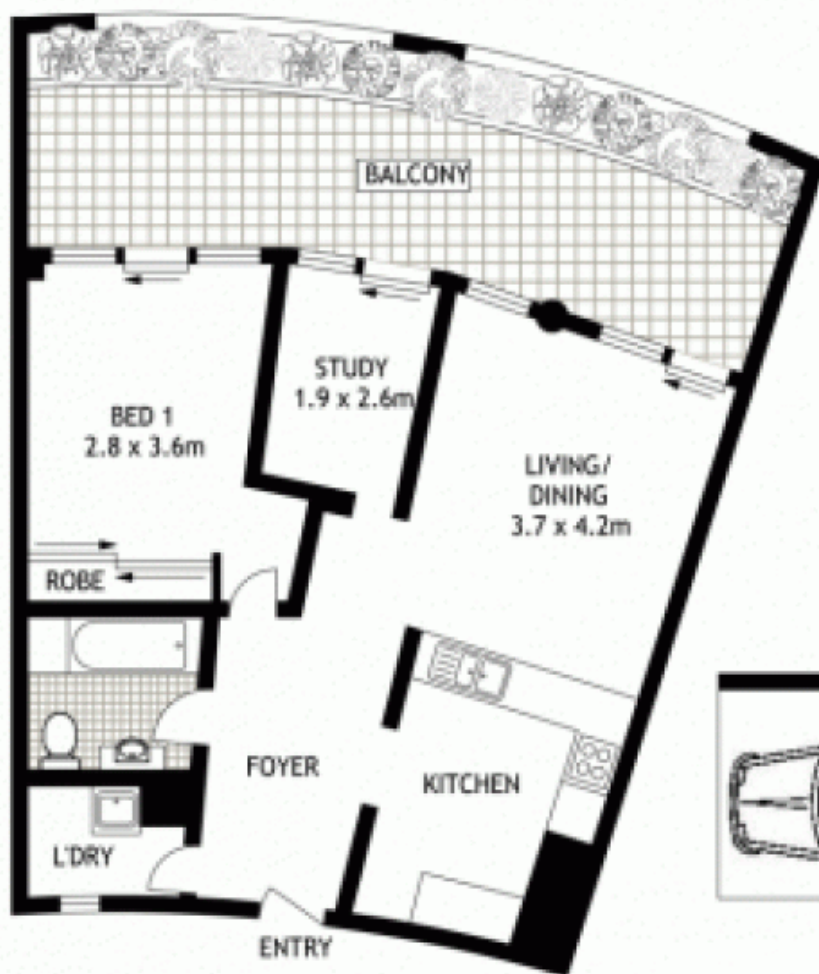
**Agent**

**Ettiene West**

 0410 593 749

 [ettiene@morton.com.au](mailto:ettiene@morton.com.au)

[morton.com.au](http://morton.com.au)



UPPER BASEMENT

THIRD FLOOR



36/446-450 ELIZABETH STREET

SURRY HILLS

SCAPE Floor Planing Disclaimer: This floor plan is conceptual only. It is provided for illustrative purposes only and should not be relied upon. We make no guarantee to the correctness of this plan. All interested parties should make and rely on their own enquiries in determining the accuracy of the information contained in this floor plan.