



# morton.

**SYDNEY** 510/23 Shelley Street

 1  1

With contemporary styling and low maintenance interiors that combine to ensure a carefree lifestyle, this superb apartment presents an affordable chance to enter an exclusive harbourside community. No more than a stroll to the heart of the CBD, this is convenient city living at its finest.

- Enjoying the morning sun of an eastern perspective
- Well proportioned open plan lounge and dining area
- Gas kitchen comes with CaesarStone benches
- Currently commanding a rental return of \$590 per week
- European laundry, 4sqm storage cage, sunny balcony
- Ducted air conditioning, common pool and gymnasium
- Double master bedroom has built-ins, balcony access

#### View

As advertised or by appointment

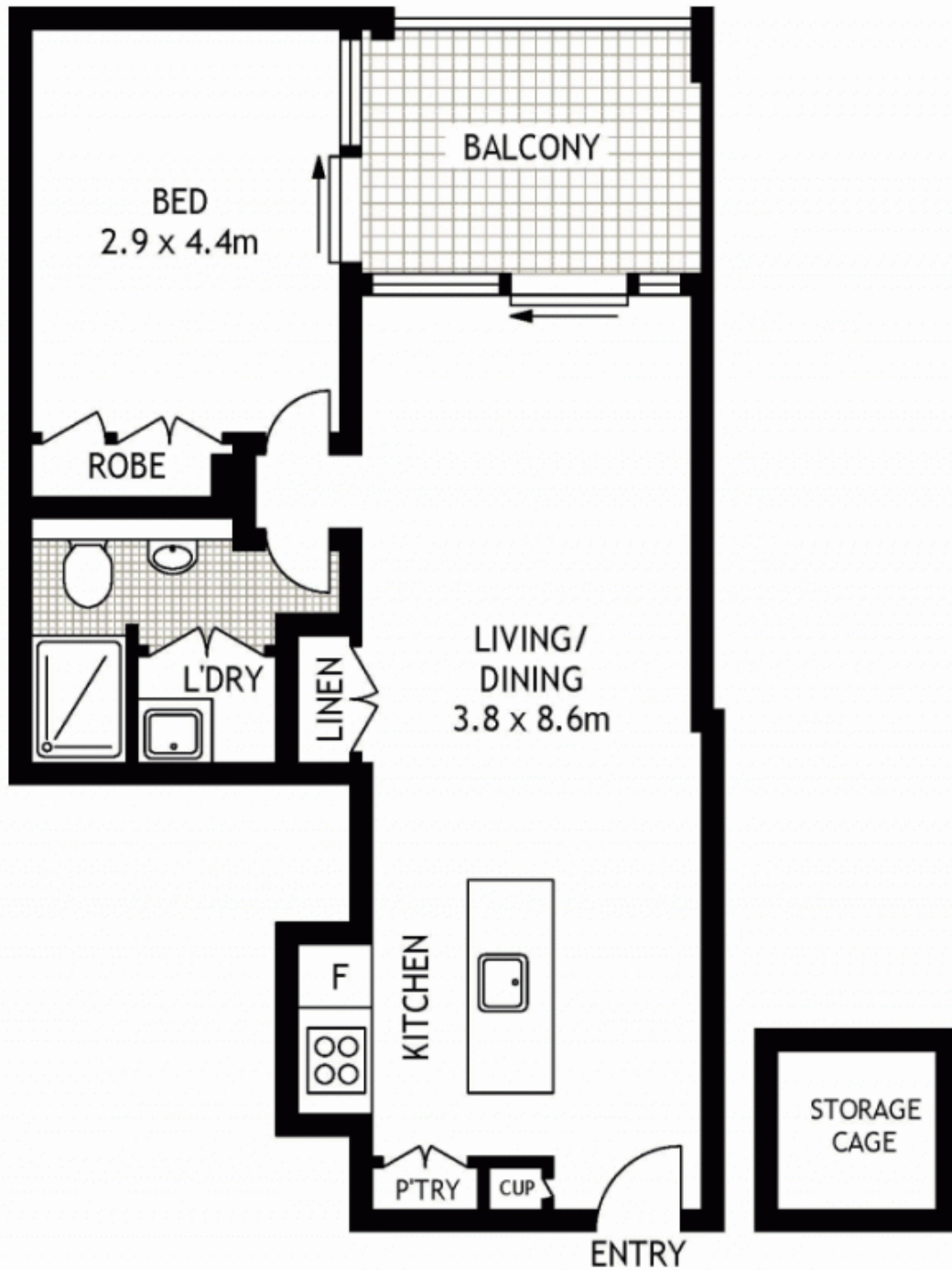
#### Agent

**Ettiene West**

 0410 593 749

 [ettiene@morton.com.au](mailto:ettiene@morton.com.au)

[morton.com.au](http://morton.com.au)



LEVEL FIVE



510/23 SHELLEY STREET

SYDNEY

SCAPE Floor Planing Disclaimer: This floor plan is conceptual only. It is provided for illustrative purposes only and should not be relied upon. We make no guarantees to the correctness of this plan. All interested parties should make and rely on their own enquiries in determining the accuracy of the information contained in this floor plan.