



**morton.**

**SURRY HILLS** 720/20 Pelican Street

 2  2  1

Flowing over an impressive 138sqm and boasting exceptional views that stretch to the Opera House, this exquisite residence ensures a lifestyle of refinement and convenience. A designer offering from celebrated Melbourne based firm Wood/Marsh Architecture, this is low maintenance luxury at its finest.

- Situated on the North East corner of the building
- Superb chance to enter a blue ribbon community
- With a generous open plan lounge and dining area
- Spacious master bedroom with walk-in and ensuite
- CaesarStone kitchen with quality Miele appliances
- Storeroom, European laundry, air con and concierge
- Manicured gardens, heated outdoor pool and gym
- Perfectly suited to the investor or professional couple
- Stunning district views that stretch across the east

**View**

As advertised or by appointment

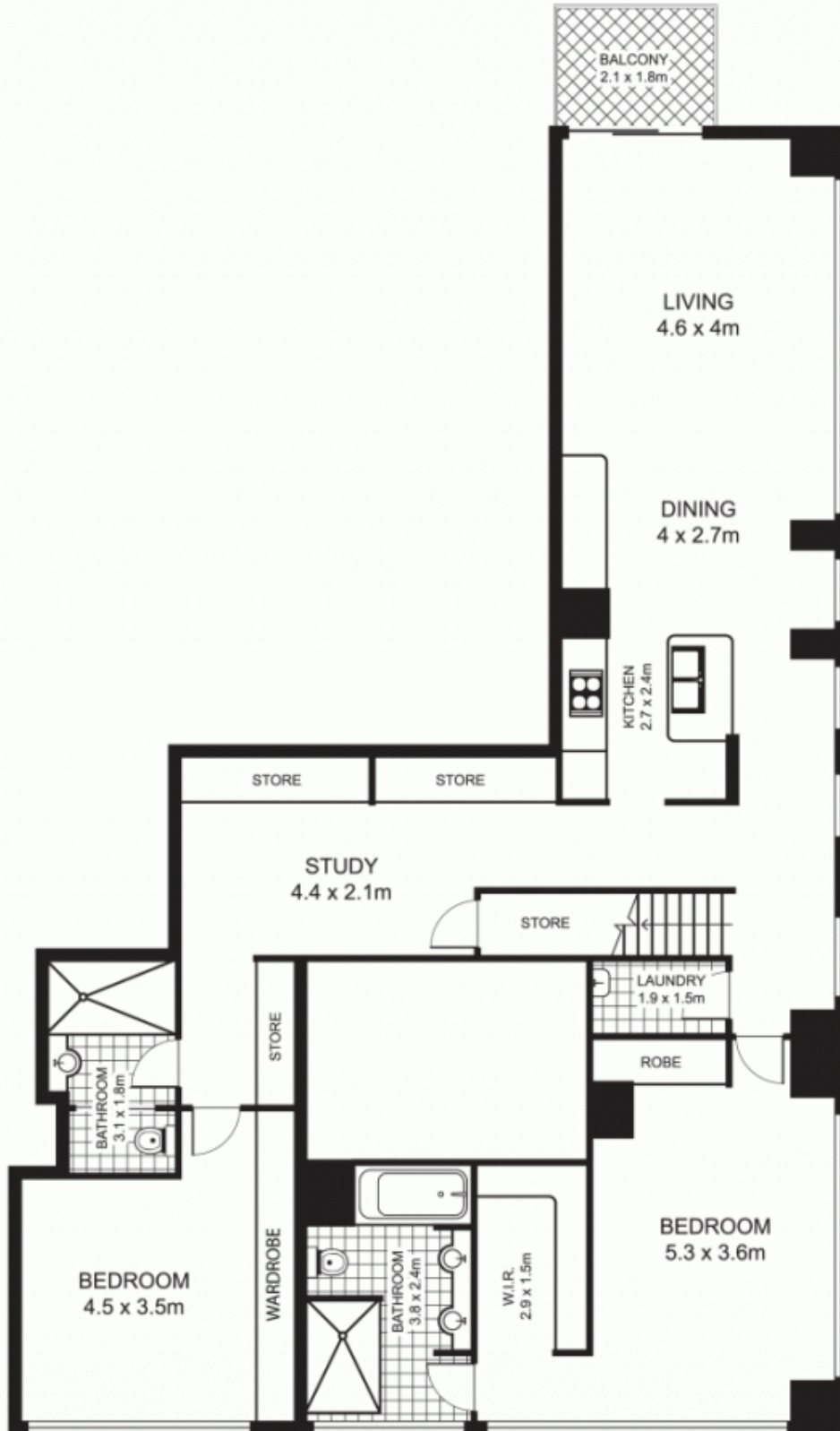
**Agent**

**Ettiene West**

 0410 593 749

 [ettiene@morton.com.au](mailto:ettiene@morton.com.au)

[morton.com.au](http://morton.com.au)



an is intended as a guide only. Layout dimensions are approximate only. No representations or warranties of any nature are given or intended. Any person using this information should rely on their own enquiries

Plans by