



morton.

SYDNEY 296/298 Sussex Street

 1  1  1

An ideal entry point into an exclusive inner city community, this inviting apartment offers a lifestyle of space and unrivalled convenience. Flowing over an impressive 61m² and occupying a sunny northerly position, it is just moments to the heart of the city and Darling Harbour.

- Perfect low maintenance investment or pied a terre
- Offering the possibility of a significant rental return
- Well finished interiors are modern and comfortable
- Granite kitchen complete with Smeg gas appliances
- Spacious double bedroom, open plan lounge/dining
- Heated indoor pool, gym, sauna and secure parking
- Sunny balcony, ducted air conditioning and intercom

Ideally suited to the professional or investor that seeks convenience and understated style, it is no more than metres to cafes, regular bus and train transport and the boutique shopping of the Queen Victoria Building.

OUTGOINGS:

morton.com.au

View

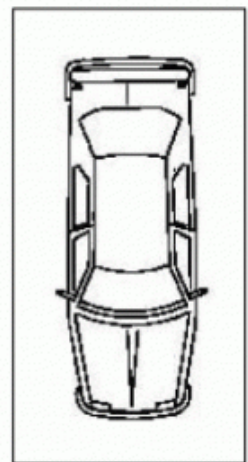
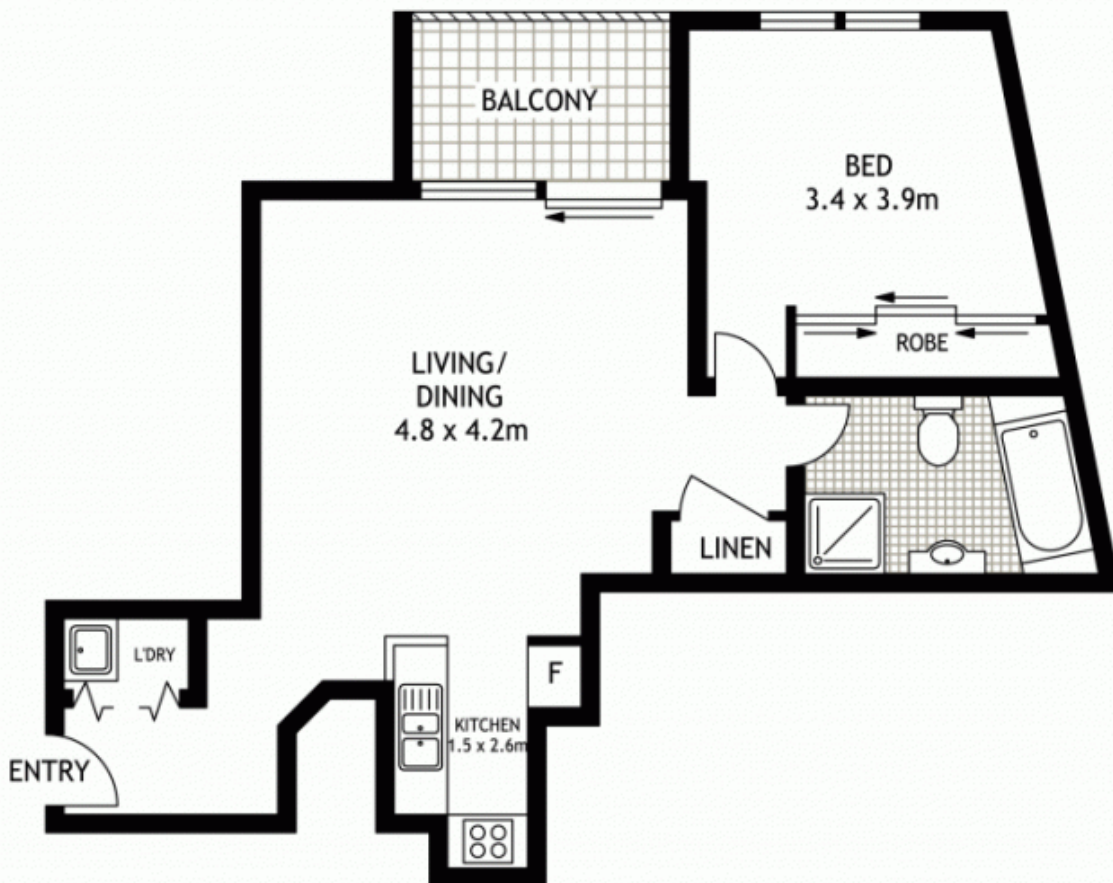
As advertised or by appointment

Agent

Ettiene West

 0410 593 749

 ettiene@morton.com.au



SINGLE SECURITY PARKING

SIXTEENTH FLOOR



296/298 SUSSEX STREET

SYDNEY

SCAPE Floor Planing Disclaimer: This floor plan is conceptual only. It is provided for illustrative purposes only and should not be relied upon. We make no guarantees to the correctness of this plan. All interested parties should make and rely on their own enquiries in determining the accuracy of the information contained in this floor plan.